



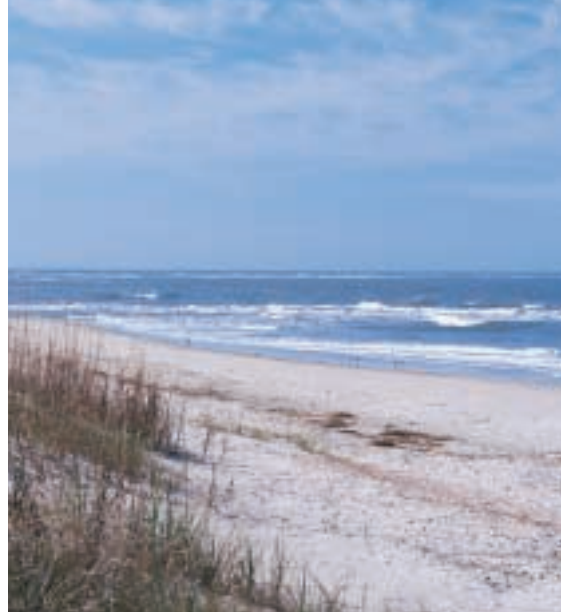
C o a s t a l | R e t r e a t



Custom home

lights up coastal community

Imagine the ideal coastal lot. Every angle provides outstanding views of the rough and wild Atlantic Ocean or the stunningly pristine marshland of an 18,000-acre nature preserve. 🛡️ Now imagine the ideal client. One that places no limitations or boundaries on your design process. This may sound like the perfect creative canvas for an architect; however, such freedom can be



daunting. Especially

Design

when your creation

must stand up to the harsh oceanfront

Challenge

environment for years to come and maximize the

panoramic views — all without being pretentious.

"No matter how enthralled people are with the different design elements of this home, it's always the windows that get the most attention."



Design Solution

One frustrating weekend in 1996 architect D. Wayne Rogers, AIA found himself sketching hundreds of lighthouses. Somehow, he was certain a lighthouse needed to anchor his latest challenge — the creation of a 5,600 square foot vacation home for his client.

Once completed, the three-story glass, wood and brick structure provided the inspiration for the rest of the home. A nautical-themed house, with curved walls using extensive amounts of glass providing expansive views of the ocean and marsh, evolved.

"We exploded the space with light and brought the outdoors inside," says Rogers, president of Catalyst Architects in Columbia, SC. "We couldn't compromise any of the views. That meant using a maximum amount of windows. We challenged Weather Shield to provide us with windows and doors that could handle the ever-present salt air, possible severe coastal storms and offer low maintenance advantages."

The solution to Rogers' challenge came in Weather Shield's vinyl-clad wood windows and doors. The owners chose a laminated glass option that resists penetration of wind-driven debris. Over a dozen eight-foot tall Weather Shield French doors enhanced the bright, airy feeling to the home.

The home's builder, Jim Nelson, believes the window's warranty and corrosive-resistant hardware package helped sell the homeowners on Weather Shield.

"Finding the right windows was only half the challenge on this house," says Nelson. "The other half was custom fitting all the windows to give a curved look to the home."

Impressive results include a private guest room surrounded by brick and deep set windows on the bottom level of the lighthouse. The second floor holds a circular dining room overlooking the nature preserve and an observation room and deck on the top floor provides ocean views. Four additional bedrooms, a living room, home theatre, kitchen and screened-in porch make up the main portion of the house.

"It was exciting to be involved in all aspects of this home, from site and product selection to furniture design," says Rogers. "The team of the homeowner, designer, builder and dealer worked incredibly well together. When I stand at the top of the lighthouse and look out at the ocean to the east and the marsh inlet to the west, I have a rewarding, peaceful feeling that I've helped create something very special."

"The Weather Shield vinyl-clad wood windows are perfect for this area. High performance, low maintenance exteriors and natural wood interiors are a great combination."

DEALER ~ Bill Brabson
Classic Building Specialties

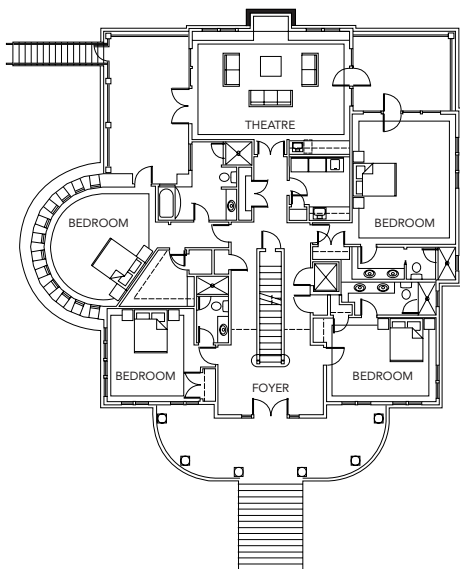


"Maximizing views while offering protection from the environment was a major concern for the homeowner. Weather Shield allowed us to meet the challenge."

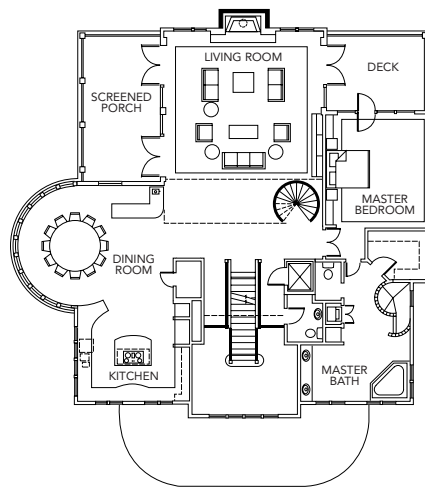
BUILDER – Jim Nelson, custom home builder



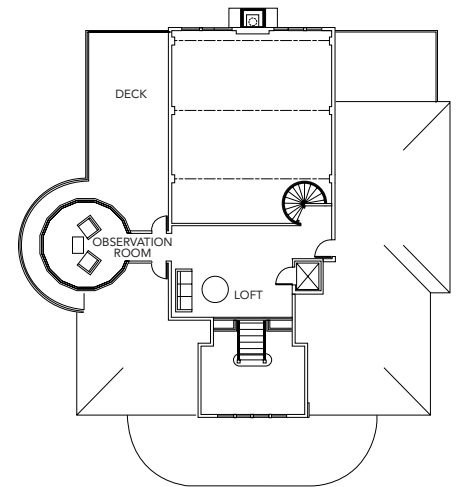
Lower Level



Second floor



Third floor





Designed by Catalyst Architects, this coastal home is part of De Bordieu Colony (meaning "Borderland of God") in Georgetown, South Carolina. The architects sited the house to take advantage of sunrises over the ocean and sunsets over the pristine marsh inlet areas of a nature preserve.

Weather Shield products used for this project

Casements

- 1 — 41 — 20 x 36 w/41 — 20 x 12 transom
- 2 — 41 — 24 x 50 w/41 — 24 x 12 transom
- 3 — 11 — 24 x 50 w/11 — 24 x 12 transom
- 8 — 21 — 20 x 54 w/21 — 20 x 12 transom
- 12 — 11 — 20 x 58 w/11 — 20 x 12 transom
- 10 — 11 — 24 x 54 w/11 — 24 x 12 transom
- 12 — 11 — 12 x 50
- 2 — 21 — 24 x 50 w/21 — 24 x 12 transom
- 3 — 11 — 24 x 68 w/11 — 24 x 12 transom
- 2 — 21 — 24 x 68 w/21 — 24 x 12 transom

Direct-Sets

- 2 — 31 — 28 x 26¹/₄ w/31 arch top
- 1 — 41 — 24 x 26 w/41 arch top

Slide/By

- 1 — 11 — 20 x 48

Awning

- 2 — 11 — 24 x 12
- 1 — 11 — 32 x 12
- 1 — 11 — 44 x 12

Product Options used

Contempra Aluma TFT (aluminum clad exterior) — standard color on French doors and arch top windows

Electrostatic paint process reduces fading and Weather Shield's custom match system can match virtually any specified color.

Contempra Vinyl TFT (vinyl clad exterior) on all casements and awnings

1" Insul Low E — outer pane is laminated glass on all casements and awnings

Energy-efficient glazing reduces thermal transfer and lowers UV radiation.

Laminated glass resists penetration of wind-driven debris and also enhances thermal performance.

Tempered glass where required by code

Weather Shield
Windows & Doors



www.weathershield.com