



Southern Living Idea House®



Timeless Cottage-Style

Home

Like a magician pulling a continuous string of scarves out of a hat, architect J. Carson Looney, F.A.I.A., possesses a seemingly immeasurable supply of design ideas. A partner in the firm, Looney Ricks Kiss, the Tennessee-based architect has designed dozens of prestigious show homes during his career. 🛡️ Going into the planning stages for the 2000 *Southern Living* Idea House® in Nashville, Looney knew he needed to perform his magic again. As the firm started designing its fourth idea home for the popular magazine, Looney and project architect David Kenoyer concentrated on producing a timeless home... designed to fit in with old-fashioned neighborhoods as well as new subdivisions. 🛡️ "The physical size of the home from the street doesn't always express the livability and beauty of the home," says Looney. "Our challenge was to create a truly 'special' home. One that has a great



interior design and flow, **Design**

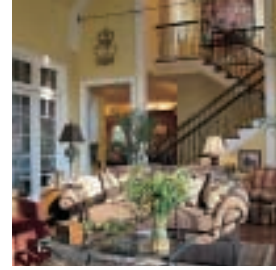
and also possesses a cottage-look

exterior that fits into a neighborhood setting."

Challenge

"Weather Shield products allow us to achieve the scale and proportion we need to complement our home designs."

ARCHITECT - J. Carson Looney, F.A.I.A.
Looney Ricks Kiss



Design Solution

From the street, the Brenthaven *Southern Living* Idea House looks like a cottage, with several attached elements. There's a central mass, but the form and scale of the home are not overpowering.

That type of understated prestige is exactly what Looney aimed to achieve when designing this Tennessee show home.

"We wanted the exterior to look like it had 'grown up' with the neighborhood," says Looney. "Our streetscape was critical to the success of the overall house. Next on the list was the integral use of natural light throughout the home."

To create a home that people could "nestle in" Looney and his team aimed to use light for both room-to-room and inside-to-outside transitions. "Pathways of light lead you through this house in a pleasant way," says Looney. "We gleaned insights from many years of working with custom homeowners to pull together the elements people respond to most ... and the natural flow of light is a key element."

In order to achieve the connection of light, Looney and his team relied on Weather Shield Legacy Series™ windows. Made especially for custom homes, the sturdy casement, picture and direct-set windows used in the home allow natural light to flow through every room. And, the use of ThermoGold™ Low E² glass in the windows helps filter out harmful ultraviolet rays. Undetectable gold particles in the glass keep out the rays and improve the

windows' thermal performance, so the home stays cooler in the summer and warmer in the winter.

"The sash, frames and mullions in the Legacy Series windows are in character with the scale, proportion and style of home we designed," says Looney. "The selection of these windows helped us achieve the desired overall character of the home.

"Then, the careful placement and scale of the windows allowed the house to breathe. The larger groupings of windows, like the mulled casement window units and casement bow in the front of the house add finesse to those rooms. After placing those larger units, we came in next with smaller windows throughout the home to add a feeling of intrigue and excitement. It's a balancing act. Combined, the strategically placed windows allow light to accent the entire home. There's not one room where you feel lost, or in the dark."

According to Looney, natural light combined with natural building materials helps give the home its timeless appeal. French doors that spill onto a porch or "outdoor room" create an extension of the home. An open access stairway within the porch itself pulls the natural materials and brown tones of the exterior together.

"This house is a collaboration of all our best ideas," says Looney. "The home is a success because it's alive with light and the play of light."

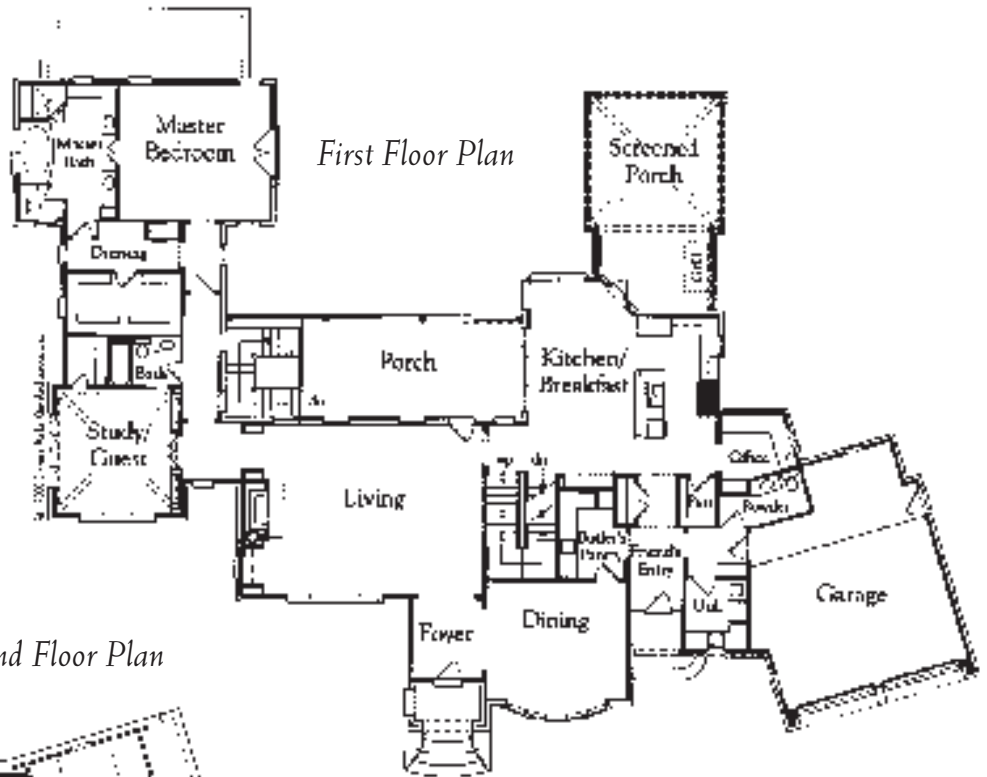
"The Legacy Series windows are some of the strongest, most durable windows I've ever installed. These windows are perfect for custom homes like the Southern Living Idea House."

BUILDER- Bill Akers
Akers Custom Homes



"Our magazine has used Weather Shield products in a variety of Southern Living Idea Houses® in the past. We believe the products are a highlight of each home, and that they lend a special sense of elegance to the Brenthaven home."

Bill McDougald
Southern Living magazine







Architect J. Carson Looney, F.A.I.A.
of Looney Ricks Kiss Architects, Inc.

Looney Ricks Kiss Architects, Inc. has been providing both residential and commercial architectural design expertise for over 17 years. With offices in four cities and over 150 employees, the firm has developed an international reputation for excellence.

During its history, Looney Ricks Kiss has received over 200 awards of recognition for design work at the local, state, regional and national levels. These awards include 31 Best in American Living Awards (BALA) presented by *Professional Builder* magazine, 31 American Institute of Architects (AIA) Memphis Awards, 30 Aurora Awards presented by the Southeast Building Conference and 15 Builders' Choice Awards presented by *Builder* magazine.

The firm represents an abundance of corporate, banking, health care, hospitality and residential clients. Community planning, urban design/revitalization and traditional neighborhood development planning with mixed-use commercial facilities are some of the firm's areas of expertise. A partial client list for the firm includes Disney Development (developer of Celebration in Florida), FedEx, John Wieland Homes, Pulte Homes, Harrah's, Marriott, Hilton Hotel Corporation, SunCom, AutoZone, Trammel Crow and Holiday Inn.

Photography Courtesy of © Southern Living, Inc. Reprinted with permission.

Weather Shield products used for this project

Casements

- 1—11—12 x 28
- 1—11—20 x 44
- 1—17—20 x 50
- 2—11—24 x 24
- 1—11—24 x 40
- 6—11—24 x 50
- 1—11—24 x 68
- 2—11—32 x 68
- 4—21—24 x 50
- 2—21—32 x 68
- 1—31—32 x 68
- 3—11—24 x 58

Casement Bow Window with Transoms

- 1—51—24 x 68

Casement Eyebrow Windows

- 3—21—24 x 68

Specialty Windows

- 2—casements with direct-set arch tops stacked above
- 1—casement picture combination with transoms

French Doors

- 3—3—0 x 8-0 outswing
- 1—5—4 x 8-0 outswing
- 4—5—4 x 8-0 stationary
- 3—5—4 x 8-0 inswing
- 1—3—0 x 8-0 inswing

French Door Transoms

- 3—5—7 7/16 x 2-0 5/8

Product Options used

Window Specifications

Some Casements with Contempra Desert Tan Aluma TFT Exterior, other windows with Contempra White Aluma TFT Exterior (extruded aluminum clad exterior)

Pine Interior

Insul ThermoGold™ Low E² Glass

7/8" Simulated Divided Lite

White Hardware and Screens on Windows

Door Specifications

Contempra White Aluma TFT Exterior (extruded aluminum clad exterior)

Pine Interior

Insul ThermoGold™ Low E² Glass

7/8" Simulated Divided Lite

10" Bottom Rail

Bright Brass 3-Point Locking System



Weather Shield
Windows & Doors

www.weathershield.com