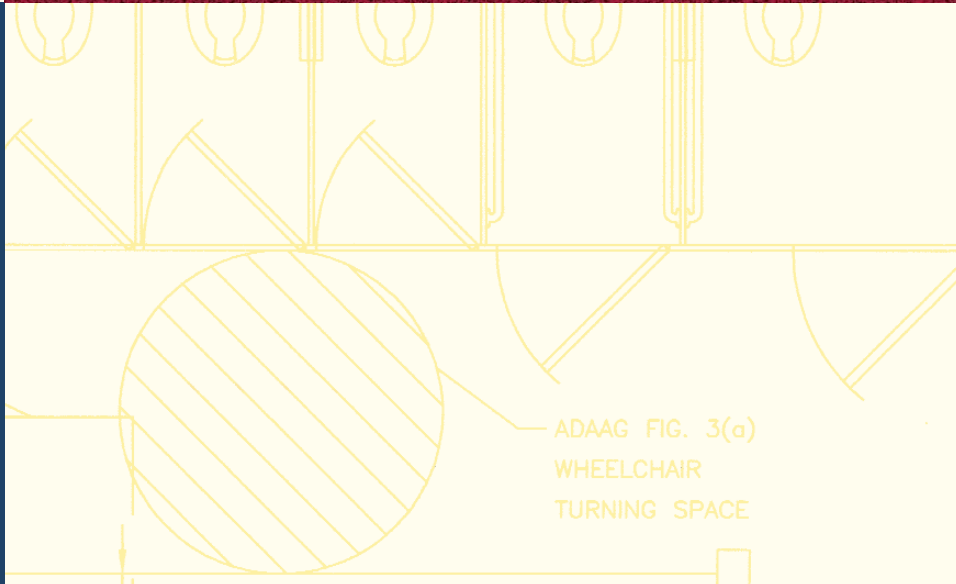
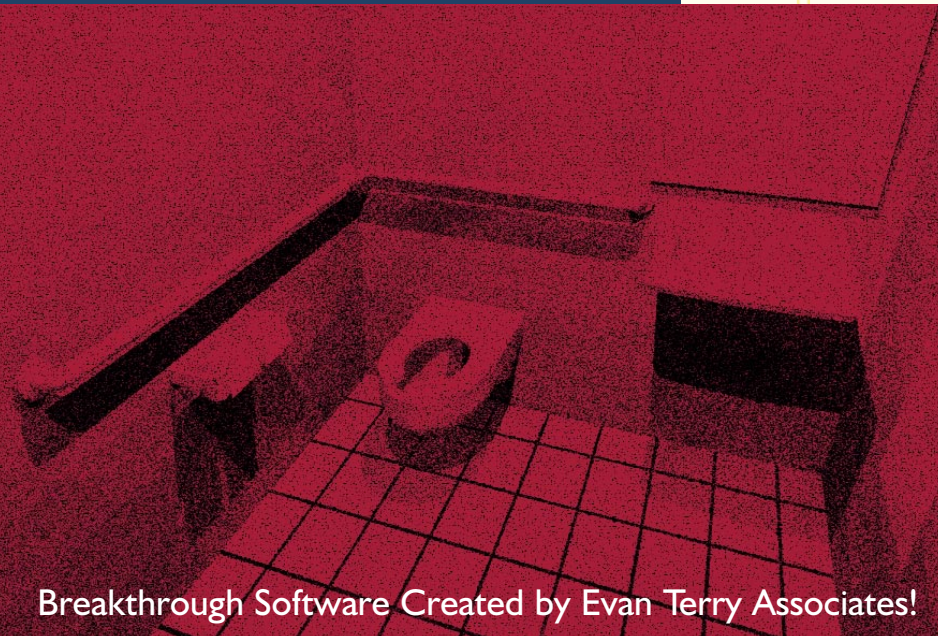


Access Compliance Software

# ADA Design Assistant®



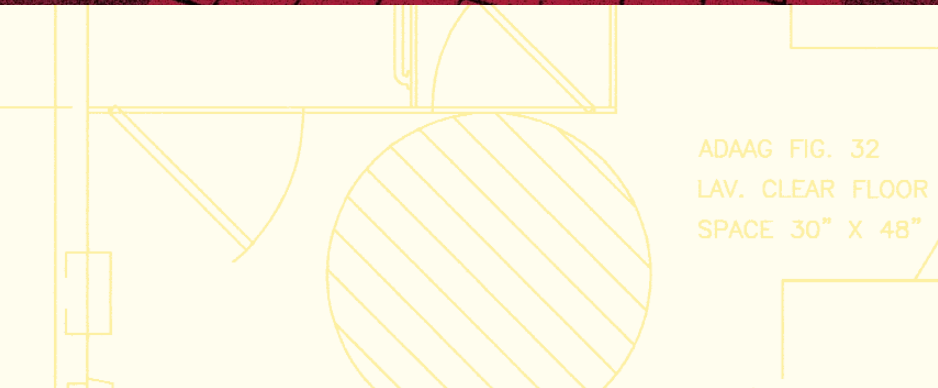
ADAAG FIG. 3(a)  
WHEELCHAIR  
TURNING SPACE



Breakthrough Software Created by Evan Terry Associates!

## Plugs into Softdesk AEC!

- Pulldown Menu and Toolbar provided
- Designs fully compliant ramps from dialog input
- Contains library of accessible toilet room designs ready to insert into floor plans
- Checks for door design compliance errors automatically in Auto-Architect drawings
- Additional access standards modules available, including:
  - CABO/ANSI A117.1
  - California Title 24
  - Florida's Access Code
  - Texas Accessibility Standards



ADAAG FIG. 32  
LAV. CLEAR FLOOR  
SPACE 30" X 48"

Accessible  
design  
faster

Save  
time

# ADA Design Assistant®

Access Compliance Software



Anyone who uses Auto-Architect for commercial building design will quickly recover [their] investment in this software.

—Michael Dakan  
for CADALYST

## BENEFITS

Comply with accessibility standards while designing with AutoCAD Release 13 or 14 and Softdesk 7.5 or 8

Saves both design time and compliance time

Helps avoid costly litigation due to mistakes

Helps make critical decisions early in the design process

Eliminates expensive on-site rework

Support for other access standards—CABO/ANSI, CA, FL and TX—available separately

## Simplify Accessible Design with ADA Design Assistant

The ADA Design Assistant® brings accessibility compliance to your AutoCAD® system. Comply with the complex regulations of the Americans with Disabilities Act early in the design process when all it takes is a mouse click instead of a jackhammer!

The ADA Design Assistant software runs seamlessly within Auto-Architect® from Softdesk® to help avoid the most expensive and most common compliance errors designers make. Uses standard Windows™ menus, toolbars and entry screens, making it simple to learn and use.









Immediate warnings are issued for values out of range and recommendations appear at design decision points.

The program was created by Evan Terry Associates, a nationally recognized architectural firm specializing in accessibility compliance, and SK Software, whose members were former developers of Auto-Architect. Softdesk modified Auto-Architect 7.5 and 8.0 with new data and links to allow the ADA Design Assistant to work quietly in the background while you design.

Thousands of facilities are facing ADA enforcement nationwide. Construction delays, lawsuits by disabled persons, Department of Justice investigations and media headlines are now more avoidable. If you design non-residential buildings you can no longer afford to hit only the “high points” of the Americans with Disabilities Act. If you avoid rework on just one project, you’ll return your investment in the ADA Design Assistant many times over.



The ADA Design Assistant toolbar provides these functions:

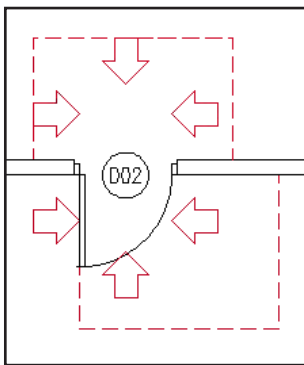
-  Door Checking
-  Door Reports
-  Ramp Generator
-  Curb Ramp Generator
-  Toilet Rooms
-  Fixtures
-  ADA and ADAAG Online
-  Project Settings

# Avoid costly mistakes

# Quick accurate compliance

## Door Maneuvering Clearances and Clear Widths

Clearance area boundaries and approach arrows are added to existing plans on a new access compliance layer.



The Door Checking module analyzes door maneuvering clearances, door widths and hardware. The program extracts all available information directly from the plan as it is designed, recognizing building components and warning of insufficient clearances. It draws boundaries around the required clearance areas on the drawing using a designated layer. Graphic arrows show latch and hinge approaches on both the push and pull sides. The maneuvering clearance marks become a permanent part of the drawing, providing graphic verification that the architectural components, fixtures and furniture have not encroached upon the required clear area.

The routines include a Clear Width Calculator which extracts as much information as possible from the drawing. Wall thickness and opening width are also analyzed for compliance. The command works with all door types, including doors in assemblies. Even two doors in a series are analyzed automatically. Clearance checking can occur either as doors are placed or at any later time.

◀ A Door Accessibility Report can be generated, showing each door's accessibility status along with reminders and reasons for non-compliance where appropriate.



The door analysis feature is the most comprehensive design tool in ADA Design Assistant.

—Michael Yatzus, AIA  
for CADENCE

### DOOR CHECKING FEATURES

Checks door approaches for correct maneuvering clearances

Calculates clear width of door opening

Creates a Door Accessibility Report—listing accessibility status of each door

Includes warnings and notes on hardware, thresholds, closers and special conditions

Warning symbol identifies problem doors

Even analyzes doors in a series

#### DOOR ACCESSIBILITY REPORT FOR DRAWING 2415PLAN GENERAL REMINDERS

##### DOOR HARDWARE REMINDER

Hardware required for accessible door passage shall be mounted no higher than 48 in (1220 mm) above finished floor.

[ADAAG 4.13.9]

##### CLEAR AREA REMINDER

The floor or ground area within the required clearances shall be level and clear. [ADAAG 4.13.6]

DOOR NUMBER: D206 ACCESSIBLE  
HARDWARE: Lever with Latch and Closer

##### CLOSER ON INTERIOR DOOR REMINDER

The sweep period of the closer shall be adjusted so that from an open position of 70 degrees, the door will take at least 3 seconds to move to a point 3 inches from the latch, measured to the leading edge of the door. [ADAAG 4.13.10]

A door closer is required that can be adjusted to meet the 5 pound maximum force to open. [ADAAG 4.13.11(2)(b)]

DOOR NUMBER: D207 \*NOT ACCESSIBLE\*  
HARDWARE: Lever with Latch and Closer

##### NON-ACCESSIBLE EGRESS

A door that is along the path of egress must also be accessible and in compliance with 4.13. [ADAAG 4.1.3(7)(d)]

##### DOOR TOO NARROW

Clear Width of door must be greater or equal to 32" measured from the face of the door opened in 90 degree position to the face of the opposite stop.

[ADAAG 4.13.5 and ADAAG Fig.24(a) and 24(b)]

# ADAAG Compliant Access Ramps

# Curb Ramp Generator



The ramp and curb [ramp] generators are simple but sophisticated and a snap to use.

—Jim Conway,  
Conway Engineering

## RAMP GENERATOR FEATURES

Rise–Run–Slope calculator with inputs and lock toggles

Intermediate landing option with special handling when ramps change direction

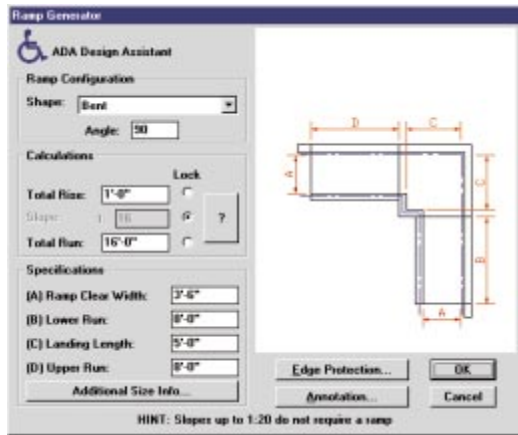
Handrails, edge protection and annotation options

Dynamic graphic controls

Straight, angled and switch-back layouts



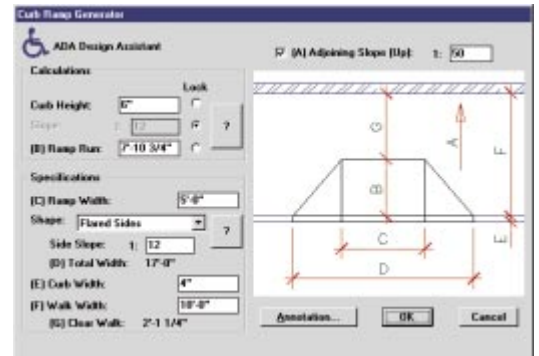
The Ramp Generator provides a dynamic interface for the creation of 2D and 3D access ramps. Straight (either with or without a landing), Bent and U-shaped styles can be created with a choice of edge conditions, handrail types and annotation. Change a parameter or option and the image instantly updates, showing the new configuration or measurements. A Rise–Run–Slope calculator includes lock toggles which allow solving for any variable while keeping the locked value constant.



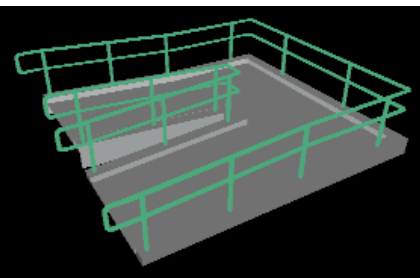
To meet ADA requirements, the Bent option accommodates an automatic increase in landing width while also correcting the edge protection and handrails accordingly.



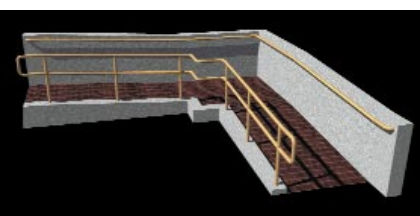
The Curb Ramp Generator creates curb ramps from a dialog interface using Flared, Returned Curb or Built-up styles. A Rise–Run–Slope calculator is included with inputs and lock toggles similar to those found in the access ramp routine. A separate side slope input is activated for the Flared and Built-up styles. All types accommodate a cross-slope on the walkway. The 3D results always form a rectangular perimeter and thus fit easily into an existing 3D walkway.



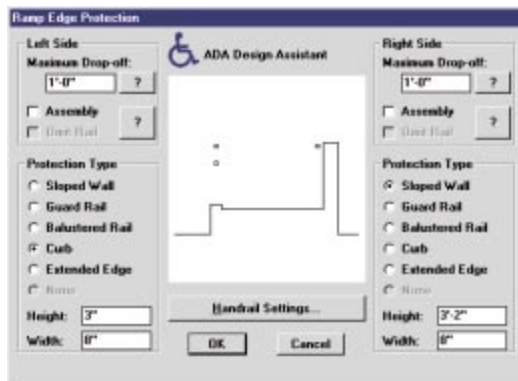
▲ Curb Ramps in Flared, Returned Curb or Built-up styles



▲ 3D results using Curb with Pipe Rail option



▲ Rendered 3D results using Curb and Wall with Pipe Rail Option



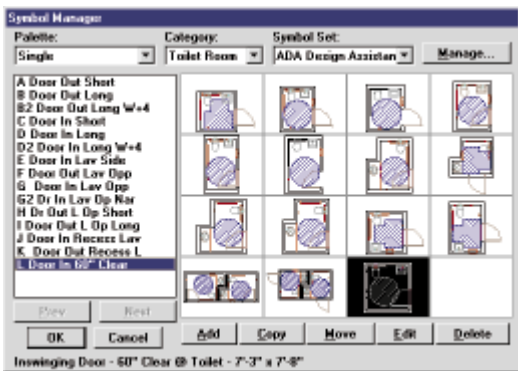
Annotation options include arrows and notes. 3D results are created from mesh and face objects and are ready for shading or rendering. Previously placed ramps may be edited using the included Redefine Ramp routine.

# Toilet Room Library

# Recommended Fixtures



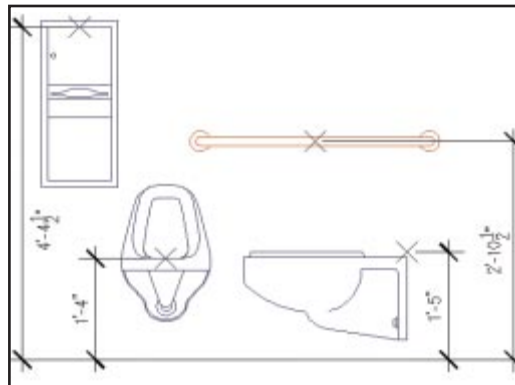
The library includes commercial single-user and multi-user toilet rooms in long, short and compact layouts ready for drag and drop placement into your drawings. They include all recommended fixtures and accessories at the proper insertion heights. These drawings allow users to instantly benefit from Evan Terry Associates' years of compliance experience. The layouts are designed to approach the minimum allowed dimensions, while incorporating realistic construction tolerances. All of the different accessibility issues are considered simultaneously. Doors cannot swing into the clear floor space at any fixture or accessory; a 60" turning space must be provided; doors must have clear maneuvering spaces; and everything must be mounted within reach and at the proper heights.



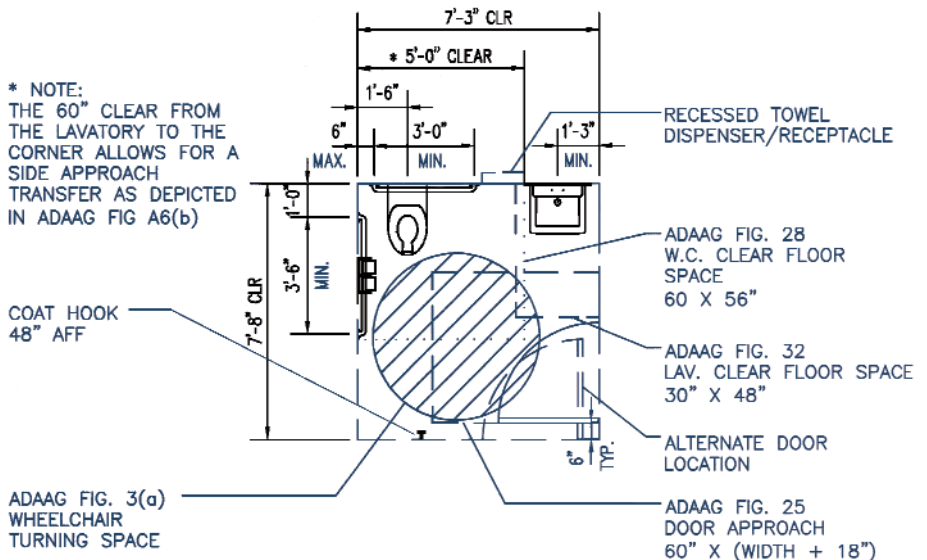
The drawings include dimensions and turning spaces as well as fixture and door clearances. They also include useful notes and reminders on non-plotting layers. A choice of both in-swinging and outswinging door layouts is provided. The drawings are selected for insertion into plans using the Softdesk Core Symbol Manager and are inserted as individual elements for easy editing.



Drawing files of recommended fixtures and accessories are included in plan, front, side and 3D surface options. The fixture symbols may be inserted into your own designs or used to modify the pre-drawn toilet rooms. Plan and 3D symbols can be interchanged to make renderings or walk-throughs. The symbols include mounting height attributes which can be used to create a Fixture and Accessories Schedule. The schedule may be taken into the field to verify compliance. Information such as manufacturer and model number is included in the schedule.



▲ Toilet fixture and accessory elevations with preferred 3D mounting heights



◀ Rendered 3D results from single-user toilet room



I was very impressed with the quality of the pre-drawn toilet facilities.

—Jim Conway,  
Conway Engineering

## TOILET ROOM LIBRARY FEATURES

Predesigned accessible single- and multi-user toilet rooms

Selection of variables—door swing, fixture location, and critical dimension

Fixtures and accessories with full 2D or 3D attributes set at compliant heights

Required clearances shown on screen to allow customizing

▲ Floor plan and notes of single-user toilet room (printing layers in black)

# ADA and ADAAG Online Help System



ADAHelp® is a sophisticated help system that allows on-screen research of the ADA Standards, the ADA Handbook and the ADA Technical Assistance Manuals. The complete text and graphics for the ADA Regulations and the ADA Accessibility Guidelines, both components of the ADA Standards, are provided in a Windows™ Help file format. The standard Help file interface will

be familiar to any Windows user without any additional training. Text may be selected, copied and pasted into other Windows applications.

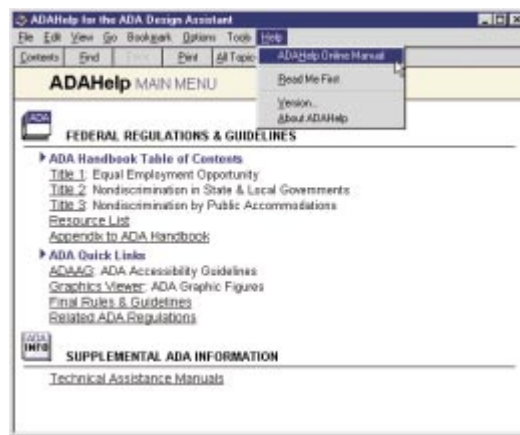
The ADAHelp system can be accessed either through Windows directly or from the ADA Design Assistant by selecting **ADAHelp Online Manual** on the **Help** pull-down menu. Initially ADAHelp displays the Main Contents window which is the starting point for all of the other ADA sections.

Using the **Go To** button with an ADAAG figure number will display the graphic image. Hyper-text links are shown as green, bold and underlined text. Such text may be selected to jump to the listed topic.

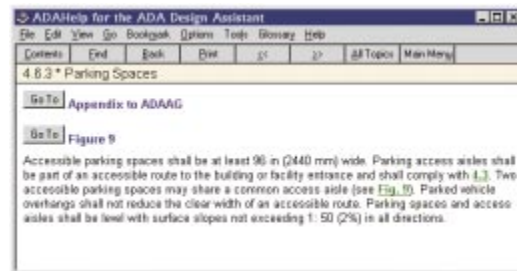
The button **All Topics** near the top of the main help screen will display a hierarchy of chapters represented as books in the standard Windows '95 Help system style and is helpful in understanding your location within the regulations and guidelines.

The **Bookmark** menu allows you to mark frequently referenced topics for quick retrieval. Bookmarks may be accessed, added and removed. An online User Guide is provided to answer any other questions you may have about the software itself.

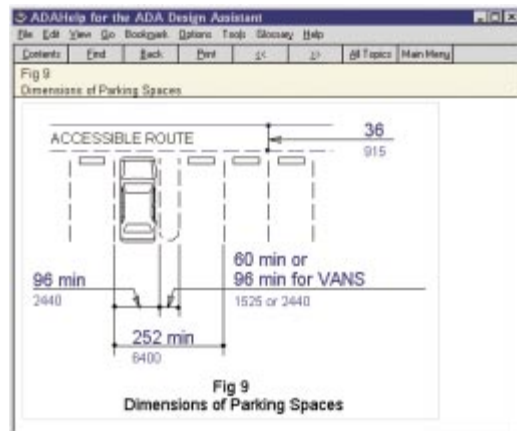
The ADAHelp Main Menu window can be accessed from both Windows and AutoCAD.



ADAHelp contains the full text of the ADA Standards, the ADA Handbook and the ADA Technical Assistance Manuals as adopted by the U.S. Department of Justice.



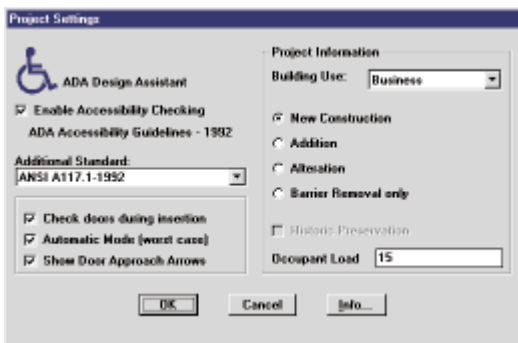
ADAHelp supplements text guidelines with specific figures from the ADA Accessibility Guidelines that provide further explanation of accessibility issues.



## Settings



Project Settings set the reviewing parameters for the Design Assistant. From this screen the designer can select the accessibility standard(s) and the additional criteria applicable to the specific project. The software tracks whether the project is new construction, alteration or an addition. It allows all the special access exceptions for alterations and historic facilities allowed by the standards.



Because the ADA is federal civil rights legislation, it applies to all states. Whenever the program is activated it will check for compliance with ADAAG. However, the designer must comply with all codes and standards applicable in local jurisdictions, too. Some states have adopted their own state accessibility standards. Many other states have adopted one of the model building codes which refer to the technical requirements of CABO/ANSI A117.1–1992, the most widely used accessibility standard at the local level. If there is any accessibility standard in addition to the federal standard, the stricter provisions of the federal or state standard must be used.

To assist designers in comparing accessibility standards, Evan Terry Associates has created additional modules for the ADA Design Assistant that will automatically compare the requirements of ADAAG to a handful of state standards or to those of CABO/ANSI A117.1–1992. State standards for California, Florida, and Texas are now available. Each module, when loaded with the Design Assistant, will compare it to ADAAG and keep your doors, ramps, curb ramps, toilet rooms, toilet fixtures and accessories within the parameters of both standards...an incredibly valuable tool!

## Availability and Support

The product requires AutoCAD Release 13 or Release 14 on Windows 95 or Windows NT and Auto-Architect 7.5 or 8. The ADA Design Assistant and the Additional Standards Modules are available through select dealers as well as through Evan Terry Associates at (205)972-9101. Free software support is provided by calling (860)875-0835 (9 to 5 p.m. EST) or email [ada@sksoftware.com](mailto:ada@sksoftware.com). All ADA and access compliance questions should be referred to Evan Terry Associates at (205)972-9101 or email [ada@evanterry.com](mailto:ada@evanterry.com). For more ADA information including a list of the most common compliance errors designers make, visit Evan Terry Associates' web site at [www.evanterry.com](http://www.evanterry.com). For information about the ADA Design Assistant software itself, visit SK Software's web site at [www.sksoftware.com](http://www.sksoftware.com).

◀ The Settings window allows you to choose additional standards and enter project information that sets specific accessibility standards.



**ADA Design Assistant** is an easy-to-use and extremely comprehensive set of tools for demonstrating and checking designs for ADA compliance.

—Michael Yatzus, AIA  
for CADENCE

### CURRENTLY AVAILABLE STANDARDS:

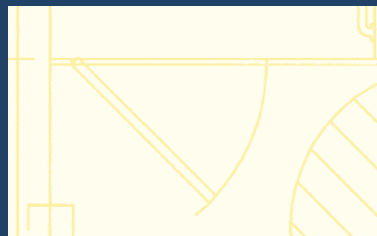
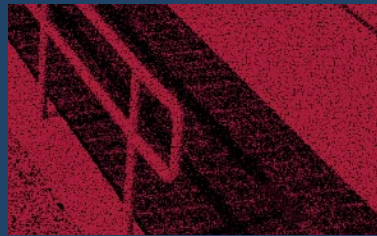
CABO/ANSI	A117.1–1992
California	Title 24–1995
Florida	FACBC–Oct.'97
Texas	Access Std–1994



## Evan Terry Associates

Sales & ADA Support  
Evan Terry Associates, P.C.  
One Perimeter Park South, Suite 200S  
Birmingham, AL 35243  
Phone (205)972-9101  
[ada@evanterry.com](mailto:ada@evanterry.com)  
<http://www.evanterry.com>  
Or contact your AutoCAD dealer.

Software Support  
SK Software, LLC  
951 Tolland Stage Road  
Tolland, CT 06084  
Phone (860)875-0835  
[ada@sksoftware.com](mailto:ada@sksoftware.com)  
<http://www.sksoftware.com>



Copyright 1998, Evan Terry Associates, P.C.  
and SK Software, LLC. All rights reserved.

ADA Design Assistant is a registered trademark of Evan Terry Associates, P.C. Softdesk and Auto-Architect are registered trademarks of Softdesk Inc. AutoCAD is a registered trademark of Autodesk, Inc. Microsoft, Windows NT and Windows 95 are registered trademarks of Microsoft Corporation. All other company names and product names mentioned are the property of their respective owners.