

STARPLUS®



*B*ringing voice, data and video communication to the desktop



Product Catalog



Contents

Vodavi Corporate Profile	3
TRIAD Digital Communications Systems.....	4
STARPLUS Digital Key Telephone Systems	11
STARPLUS DHS (Digital Hybrid System).....	18
STARPLUS Electronic Key & Hybrid Telephone Systems	19
STARPLUS Business Phones	23
Computer Telephone Integration (CTI)	25
Voice Processing	27
Internet-Ready Voice Mail and Interactive Voice Response	29
Wireless Communications	31
Automatic Call Distribution	32
Internet Telephony	32
Sales Materials & Brochures	33
Customer Service & Support	34

Vodavi Technology, Inc.



A Vision for the Future

Vodavi was founded in 1983, with the vision that the convergence of voice, data and video would become integral to effective business communications. Throughout the years, Vodavi has focused on making that vision a reality by bringing the best of these technologies, practically and affordably to small to medium-sized enterprises.

Vodavi primarily serves the needs of businesses with fewer than 200 employees, which is the fastest-growing business sector, and comprises over 85% of the businesses in America. By specializing in this market segment, Vodavi is able to deliver targeted solutions to customer applications, which meet their quality, reliability, flexibility and budgetary requirements.

Well-Poised for Success

Vodavi currently holds over 4% market share in the key telephone system market, which represents well over 5 million telephone lines installed per year. However, its strength is in the small business market segment (under 50 stations) where Vodavi enjoys over 12% market share and ranks as the number four manufacturer*.

Vodavi continues its success by providing product solutions that are fully featured and competitively priced, representing the best value for the investment an organization can make in its communications system. Vodavi's STARPLUS systems are designed to allow optimum flexibility for system configuration and growth while providing features and capabilities, normally found only on larger, more expensive PBX systems.

Vodavi is committed to serving the marketplace and fulfilling the needs of our customers through the design, manufacturing, distribution and support of a broad range of telecommunications systems, commercial grade telephones, desktop video conferencing systems, computer telephony, voice messaging and call processing products.

** Dataquest Inc., 1996 Key Telephone System Market Share Report*



*Vodavi Technology, Inc. Corporate Headquarters
Scottsdale, Arizona*

Revolutionizing the Way Businesses Communicate

No longer does a business with 20 employees need to have a less sophisticated communications system than one with 20,000. Vodavi's expertise is bringing advanced digital communications solutions to small and medium-sized enterprises.

From digital telephone systems that help you communicate better, to voice processing systems that make sure your people are always accessible, we put you in touch with your customers.

You can also add computer telephony options to integrate to databases that put valuable caller information at your fingertips, and affordable video conferencing that puts you right in front of your customers. By bringing voice, data, and video capabilities to your desktop, Vodavi offers you virtually unlimited business communications options.

Focus on Customer Satisfaction

Quality and service go hand in hand to ensure customer satisfaction. At Vodavi, we believe that customer satisfaction is both our primary goal and our primary responsibility. To achieve this, we have a service & support network throughout the United States, servicing customers in virtually every city or metropolitan area.

At our corporate headquarters in Scottsdale, Arizona, our highly trained sales and technical support staffs stand ready to address questions or concerns. We are proud to provide unsurpassed certification, training and support to our network of distributors, dealers and service providers, to ensure their ability to offer our customers superior service and a full line of business communications products.

Vodavi's Core Values

- Outstanding Customer Satisfaction
- Winning Products
- Success Through Teamwork
- Partnership With Our Employees
- Integrity in Everything We Do

The TRIAD Family



With all the choices, technology and possible applications, business communications are no simple matter today. Voice mail, E-mail, the Internet, call centers, computer telephony, networking, ISDN, wireless — all may be part of your communications system. You need a system on which you can build a solid foundation — one that can ensure that you will be prepared to handle the communication possibilities of the future. That system is Vodavi's TRIAD Digital Communications system — a new digital platform that takes complexity out and puts the power of voice, data and video on your desktop.

The TRIAD family of digital communications systems provides affordable and easy-to-use solutions that can start out as small as 3 lines and 8 telephones, and go all the way up to 132 lines and 252 stations. Best of all, if you outgrow any of the smaller systems and want to upgrade to a larger one, your investment is protected, as all models of TRIAD telephones are compatible with the entire system family.

Caller ID Integration enhances call handling by combining telephone company Caller ID data with system call processing. Caller ID features include Incoming Caller ID Name or Number on display, Incoming Caller SMDR, Unanswered Call Management, Name or Number Translation and Computer Telephone Integration.

Computer Telephone Integration (CTI) helps you provide superior customer service by linking your telephone to your computer system, providing screen pops, database access and messaging applications. All TRIAD telephone models support CTI through the addition of an optional CTI Module, and integrate seamlessly with Vodavi's Discovery^{CT} software.

Cordless Communications Integration with The WandererTM cordless handset allows you to handle calls with freedom and mobility and still have access to important TRIAD system features and functions.

Automatic Call Distribution provides comprehensive call management through enhanced call routing capabilities, numerous reporting options and customizable real-time displays.

Networking Capabilities accommodate high-speed digital T-1 trunking. Features include Direct Number Identification Service (DNIS), Automatic Number Identification (ANI) and Direct Inward Dialing (DID).

Internet Telephony with Discovery^{IP} Data/Voice gateway. This plug-and-play Internet Telephony Solution provides packetized voice transmission over both the public Internet and private IP networks.

Voice Messaging is supported through integration with several Vodavi voice processing systems. Dispatch is a compact, yet comprehensive and scalable voice processing system. Digital Dispatch provides digitally integrated voice processing, including Caller ID. Pathfinder uses the power of the Windows NT operating system to provide sophisticated capabilities such as IVR, Unified Messaging, Internet Fax Delivery, Fax-on-Demand and Point-to-Point Internet networking.

Digital System Choices

Four system sizes offer flexible configuration possibilities to meet the requirements and budgets of your customers.

TRIAD S expands from 3 lines and 8 stations to 12 lines and 32 stations, and includes most of the powerful system features of the larger systems.

TRIAD₁ incorporates four slots for flexible configuration up to 78 ports, and includes all the powerful system features of the larger systems.

TRIAD₂ uses the same hardware platform as the TRIAD₁, with expansion capabilities to 108 ports to support larger applications.

TRIAD₃ — the flagship system that supports up to 376 ports, and provides maximum flexibility and expansion opportunities.

Highlights

- All TRIAD telephones are **CTI-enabled** to increase your productivity now or in the future!
- **Directory Dialing, Speed Dialing and Last-Number Redial** make calling out fast and easy
- **Answering Machine Emulation** lets you listen to callers while they leave a message — you can pick up the call or let it remain in Voice Mail
- **Station Relocation** features and user programmability reduce labor and installation charges
- Incoming callers can dial extensions directly with optional **DID** and **DNIS**
- **Caller ID Integration** and ANI tells you who is calling before you pick up the phone
- Reduce long distance costs with **Least Cost Routing and Programmable Toll Restriction**
- **SMDR** details system information on incoming and outgoing calls, helping you manage your business
- Have calls announced without interrupting your call with **Off Hook Voice Over**
- **2-Year Warranty** is your guarantee of quality and reliability
- **Full Speakerphone** with muting capabilities for privacy
- 48-character LCD display shows you detailed messages at a glance
- TRIAD Digital telephones are available in your choice of **charcoal grey, off-white or burgundy**
- **24 User-Programmable Feature Buttons** let you customize your phone to meet your specific needs
- **Red and Green LEDs** differentiate lines in use from ringing lines
- Never miss a message with the **Voice Mail** notification light
- **Hot Keypad** lets you dial your number instantly, without having to pick up an outside line first
- Set up your own personal directory dialing system with up to 80 system and 20 station **Speed Dial** numbers



TRIAD Telephones



Basic 8-button Speakerphone Part No. TR9011-XX
6 fixed and 8 feature buttons with fully integrated speakerphone.



Executive 24-button Speakerphone Part No. TR9015-XX
12 fixed and 24 feature buttons with fully integrated speakerphone and LCD display.



Enhanced 24-button Speakerphone Part No. TR9013-XX
12 fixed and 24 feature buttons with fully integrated speakerphone.



DSS Attendant Console Part No. TR9010-XX
48 buttons support an attendant console or answering position.



Executive 12-button Speakerphone Part No. TR9014-XX
12 fixed and 12 feature buttons with fully integrated speakerphone and LCD display.

TRIAD Telephone Wall Mount Kit Part No. TR9068-XX



Call (800) 843-4863
for TRIAD Dealer
Program Qualification

STARPLUS Triad Digital Systems are available only to TRIAD Authorized Dealers. To qualify for a TRIAD dealership, you must complete the approval process, maintain quarterly purchase commitments, and maintain a trained and certified technician on staff. For information on becoming a TRIAD dealer, call Vodavi at (800) 843-4863.

TRIAD-S System Components

TRIAD-S

TRIAD-S Promo Package Part No. TR5092-XX

(3x8 with 3 LCD phones)*

Package includes one basic key service unit (BKSU) and three 24-button Executive Display Speakerphones.

TRIAD-S Promo Package Part No. TR5094-XX

(6x16 with 8 LCD phones)*

Package includes one basic key service unit (BKSU), one CKIB and eight 24-button Executive Display Speakerphones.

TRIAD-S Basic Key Service Unit (BKSU) Part No. 5000-00

Basic key service unit provides one music source, one DTMF, one Ext. page and two relays. One BKSU required in each system.

Expansion Key Service Unit (EKSU) Part No. 5002-01

Provides 2 expansion card slots.

Miscellaneous Service Unit (MISU) Part No. 5035-00

Provides 2 RS-232 ports, 2nd music input, ICLID, SMDR.

Modem Unit (MODU) Part No. 5030-30

Module that provides remote programming.

DTMF Receiver Unit (DTMF-A) Part No. 9033-10

Optional module provides 4 receivers, installs on a T-1 board to supply additional DTMF receivers to the system.

CKIB, 3x8 Part No. 5032-00

Provides 3 loop-start CO lines and 8 digital stations.

CSIB, 3x8 Part No. 5033-00

Provides 3 loop-start CO lines and 8 single line telephone stations. Ring generator built in.

Message Waiting Unit (MSGU) Part No. 5033-20

Optional board installed on single line board when Message Waiting lamps are required on single line telephones.

CTI Interface Module Part No. 9020-00

Provides connection between PC and any TRIAD digital telephone.

TRIAD S Basic Software and PMU* Part No. TR5521-01

Basic software.

TRIAD S ACD Software and PMU* Part No. TR5521-02

ACD Features.

Battery Charging Unit Part No. VC61101

Provides float charging to batteries. (Batteries not included. Max battery type = 24vdc, 40AH.)

Caller ID Unit 4 Lines (ICLID) Part No. 1440-00

Interfaces 4 CO lines. Includes documentation and power supply.

Caller ID Unit 8 Lines (ICLID) Part No. 1480-00

Interfaces 8 CO lines. Includes documentation and power supply.

Caller ID Cable Part No. 9081-00

Connects Caller ID unit to KSU. One required for each Caller ID unit.

Color Code: XX = 08 Off White, 60 Burgundy, 71 Charcoal Gray

* All TRIAD software must be ordered separately to be drop-shipped directly from Vodavi to Authorized TRIAD Dealers only.



STARPLUS Triad Digital Systems are available only to TRIAD Authorized Dealers. To qualify for a TRIAD dealership, you must complete the approval process, maintain quarterly purchase commitments, and maintain a trained and certified technician on staff. For information on becoming a TRIAD dealer, call Vodavi at (800) 843-4863.

TRIAD₁ & TRIAD₂ System Components

TRIAD₁ Promo Package* **Part No. TR8492-XX**

Package includes key service unit (KSU), power supply, MPB, miscellaneous service board, (1) CO-6 line board, (1) digital 24 board and (4) 24-button Executive display speakerphones.

TRIAD₂ Promo Package* **Part No. TR8092-XX**

Package includes key service unit (KSU), power supply, MPB, miscellaneous service board, (2) CO-6 line boards, (1) digital 24 board and (5) 24-button Executive display speakerphones.

TRIAD₁ KSU **Part No. 8003-00**

Basic key service unit provides 6 card slots for the MPB, MSB and CO and station boards. One required.

TRIAD₂ KSU **Part No. 8000-00**

Basic key service unit provides 9 card slots for the MPB, MSB and CO and station boards. One required.

Expansion KSU **Part No. 8002-01**

Provides 4 expansion card slots.

Misc. Service Board (MISB) **Part No. 8035-00**

Required to support background music/music on hold (2 channels), 4 relays (miscellaneous), and 2 external page zones.

Serial Interface Unit (SIU) **Part No. 8035-10**

Provides 2 additional RS-232C ports using DB-9 plugs for SMDR, Caller ID, and ACD reporting.

Modem Unit (MODU) **Part No. 8030-30**

Module that plugs onto the MPB to provide remote programming.

Power Fail Transfer Unit (PFTU) **Part No. 8036-00**

Optional unit to transfer up to 6 CO lines to 6 SLT telephones/stations.

Loop Start CO Board (LCOB) **Part No. 8031-00**

Supports up to 6 loop start CO lines. System max of 36 lines.

DID CO Board (DIDB) **Part No. TR8031-10**

Supports up to 4 DID CO lines. System max of 24 lines.

T-1 Kit with CSU **Part No. TR8031-30**

Kit includes T-1 board, cables for T-1 circuit and CSU.

T-1 Board **Part No. TR8031-31**

Supports direct T-1 interface of up to 24 channels. A maximum of 2 T-1's per system.

DTMF Receiver Unit (DTMF-A) **Part No. 9033-10**

Optional module provides 4 receivers, installs on a T-1 board to supply additional DTMF receivers to the system

DTMF Receiver Unit (DTRU) **Part No. 8031-50**

Optional module provides 2 receivers, installs on loop start CO board and SLT board to supply additional DTMF receivers to the system.

Electronic Telephone Interface Board **Part No. 8032-20**

(ETIB-12)

Supports 12 electronic key station ports.

Digital Telephone Interface Board **Part No. 8032-30**

(DTIB-12)

Supports 12 digital station ports.

Digital Telephone Interface Board **Part No. 8032-40**

(DTIB-24)

Supports 24 digital station ports.

Single Line Interface Board (SLIB-6) **Part No. 8033-00**

Supports 6 single line telephone ports.

Message Waiting Unit (MSGU) **Part No. 8033-10**

Optional board installed on single line board when Message Waiting lamps are required on single line telephones.

Ring Generator Unit (RGU) — Internal **Part No. 8073-00**

Used whenever single line telephone boards are installed on system. Supplies ring and message waiting voltage for up to 2 SLT boards.

Ring Generator Unit (RGU) — External **Part No. 8073-10**

Used whenever single line telephone boards are installed on system. Supplies ring and message-waiting voltage. Used for high SLT usage.

CTI Interface Module **Part No. 9020-00**

Provides connection between PC and any TRIAD digital telephone.

Master Processor Board (MPB)* **Part No. TR8030-01**

Supports modem and one serial port. One required per system.

Power Supply **Part No. 8071-20**

Provides system power. 250 Watt. One required per system.

Color Code: XX = 08 Off White, 60 Burgundy, 71 Charcoal Gray

* All TRIAD software must be ordered separately to be drop-shipped directly from Vodavi to Authorized TRIAD Dealers only.



STARPLUS Triad Digital Systems are available only to TRIAD Authorized Dealers. To qualify for a TRIAD dealership, you must complete the approval process, maintain quarterly purchase commitments, and maintain a trained and certified technician on staff. For information on becoming a TRIAD dealer, call Vodavi at (800) 843-4863.

TRIAD₁ & TRIAD₂ System Components



Caller ID Unit Part No. 1440-00

Interfaces 4 CO lines.

Caller ID Unit (ICLID) Part No. 1480-00

Interfaces 8 CO lines. Includes documentation and power supply.

Caller ID Cable Part No. 9081-00

Connects Caller ID unit to KSU. One required for each Caller ID unit.

TRIAD₁ and TRIAD₂

Basic System Software (EPROMs)* Part No. TR8020-01

Automatic Call Distribution Part No. TR8020-02

(ACD) System Software*

Includes all standard system features plus advanced ACD functions.

PC/DBA-DOS Part No. 8850-10

Database programming software for the PC.

TRIAD₃ System Components

TRIAD₃ Promo Package (16x24)* Part No. TR9092-00

Package consists of key service unit (KSU), 10 Amp power supply, MPB, MSB, DC/DC converter, (2) loop start CO-8 boards and (2) digital 12 boards.

Basic KSU Part No. 9000-00

Basic cabinet, 1 required with each system, can work with an expansion cabinet for a maximum of 17 card slots. Houses 1 or 2 power supply(s), DC/DC board, CPU and peripheral boards.

Expansion KSU 1 (10 slots) Part No. 9002-01

Mounts above the basic KSU and provides 10 additional card slots for peripheral boards (except T-1, DTIB-E, and ISDN).

Expansion KSU 2 (6 slots) Part No. 9002-02

Mounts to right of basic KSU or expanded KSU and provides 6 additional card slots for peripheral boards (except T-1 and ISDN).

Misc. Service Board (MISB) Part No. 9035-00

Required to support background music/music on hold (2 channels), 6 relays (miscellaneous), and 2 external page zones.

Serial Interface Unit Part No. 9030-30

Provides 2 additional RS-232C ports using RJ-45 jacks used for SMDR or Caller ID reporting.

Power Fail Transfer Unit Part No. 9036-00

Optional unit to transfer up to 6 CO lines to 6 SLT telephones/stations.

10 Amp Power Supply Part No. 9071-10

Power supply requirements are based on boards used in the system. Digital station boards require more power than other types of boards. See charts in manual for guidelines or use Configurator™ Autoquote program.

15 Amp Power Supply Part No. 9071-15

Power supply requirements are based on boards used in the system. Digital station boards require more power than other types of boards. See charts in manual for guidelines or use Configurator™ Autoquote program.

Memory Expansion Unit Part No. 9030-20

Required when system exceeds 48 CO lines or 96 stations.

DC/DC Converter Part No. 9074-00

Required for system, converts 24-volt DC power to regulated voltages (+5v, -5v, +12v). Also provides 48-volts for DID board.

Battery Charging Unit Part No. 9072-00

Optional board mounts in the DC/DC board to support backup batteries. Batteries not included.

Color Code: XX = 08 Off White, 60 Burgundy, 71 Charcoal Gray

* All TRIAD software must be ordered separately to be drop-shipped directly from Vodavi to Authorized TRIAD Dealers only.



STARPLUS Triad Digital Systems are available only to TRIAD Authorized Dealers. To qualify for a TRIAD dealership, you must complete the approval process, maintain quarterly purchase commitments, and maintain a trained and certified technician on staff. For information on becoming a TRIAD dealer, call Vodavi at (800) 843-4863.

TRIAD₃ System Components, contd.



Ring Generator Unit (RGU) Part No. 9073-00

Used whenever single line telephone boards are installed on system. Supplies ring and message waiting voltage.

Loop Start CO Board (LCOB) Part No. 9031-00

Equipped for 8 loop start CO lines.

DID CO Board (DCOB) Part No. 9031-10

Equipped for 8 DID CO lines.

Ground Start CO Board (GCOB) Part No. 9031-50

Equipped for 8 ground start CO lines.

DTMF Receiver Module - B (DTMF-B) Part No. 9031-01

Optional module provides 4 receivers, installs on loop start, ground start, or DID CO line board to supply additional DTMF receivers to the system.

T-1 Kit with CSU Part No. 9031-30

Kit includes T-1 board, cables for T-1 circuit and CSU.

T-1 Board Part No. 9031-31

Supports direct T-1 interface of up to 24 channels. A maximum of four T-1's per system.

Phase Lock Loop (PLL) Part No. 9030-40

Required when using T-1 board, to regulate clock signals.

DTMF Receiver — A (DTMF-A) Part No. 9033-10

Optional module provides 4 receivers, installs on single line board and T-1 board to supply additional DTMF receivers to the system.

Electronic Telephone Interface Board (ETIB-12) Part No. 9032-20

Equipped for 12 electronic key station ports.

Digital Telephone Interface Board (DTIB-12) Part No. 9032-00

Equipped for 12 digital station ports. Supports the 9032-10 expansion board.

Digital Telephone Interface Board (DTIB-E) Part No. 9032-10

Equipped for 12 digital station ports. Mounts on the 9032-00 DTIB-12 board.

Single Line Interface Board (SLIB-12) Part No. 9033-00

Equipped for 12 single line telephone ports.

Message Waiting Unit Part No. 9033-20

Optional board installed on single line board when message waiting lamps are required on single line telephones.

CTI Interface Module Part No. 9020-00

Provides connection between PC and any TRIAD digital telephone.

Master Processor Board (MPB)* Part No. 9030-01

MPB required with each system. Supports program module, one on-board RS-232 port and modem for remote programming. Optionally can support Serial Interface Unit for two additional RS-232 ports and Phase Lock Loop Unit.

Caller ID, 4 port Part No. 1440-00

Interface 4 CO lines

Caller ID Unit (ICLID) Part No. 1480-00

Interfaces 8 CO lines. Includes documentation and power supply.

Caller ID Cable (MPB) Part No. 9081-00

Connects Caller ID unit to Master Processor Board.

Caller ID Cable (SIU) Part No. 9081-10

Connects Caller ID unit to Serial Interface Unit.

Standard System Software* + PMU Part No. TR9921-01

ACD System Software* + PMU Part No. TR9921-02

Includes all standard system features, plus advanced ACD features.

PC/DBA-DOS Part No. 8850-10

Database programming software for the PC.

Color Code: XX = 08 Off White, 60 Burgundy, 71 Charcoal Gray

* All TRIAD software must be ordered separately to be drop-shipped directly from Vodavi to Authorized TRIAD Dealers only.



STARPLUS Triad Digital Systems are available only to TRIAD Authorized Dealers. To qualify for a TRIAD dealership, you must complete the approval process, maintain quarterly purchase commitments, and maintain a trained and certified technician on staff. For information on becoming a TRIAD dealer, call Vodavi at (800) 843-4863.

Features & Additional Equipment



FEATURE	STD PKG.	ACD PKG.	ADD'L EQUIPMENT	FEATURE	STD PKG.	ACD PKG.	ADD'L EQUIPMENT	FEATURE	STD PKG.	ACD PKG.	ADD'L EQUIPMENT
ACCOUNT CODES	x	x		Board				MUTE KEY	x	x	
VERIFIED ACCOUNT CODES	x	x		DIRECT INWARD SYSTEM ACCESS (DISA)				NAME IN DISPLAY	x	x	Exec Keyset
ANSWERING MACHINE MODE	x	x	VM SYSTEM	CO Line Group Access	x	x	DTMF Receiver	NAME/NUMBER DISPLAY AT IDLE	x	x	Exec Keyset
AT COMMAND MODE	x	x		DISA Call Forwarding	x	x		NIGHT SERVICE FEATURE	x	x	
ATTENDANT RECALL	x	x		Programmable Access	x	x		NIGHT SERVICE MODE			
AUTOMATIC CALL BACK TIMER	x	x		Station Access	x	x		Automatic Night Mode Operation	x	x	
AUTOMATIC CALL DISTRIBUTION (ACD)				Trunk-to-Trunk	x	x		External Night Ringing	x	x	
Agent Positions	x			DIRECT STATION SELECTION	x	x		Manual Operation	x	x	
Alternate ACD Group Assignment	x			DIRECT TRANSFER MODE	x	x		Night Class of Service (COS)	x	x	
ACD Group Member Status	x			DIRECTED CALL PICK-UP				Night Ringing Assignments	x	x	
Guaranteed Message Announcement	x			ACD/UCD Groups	x	x		Universal Night Answer (UNA)	x	x	
Incoming CO Direct Ringing	x			Station	x	x		Weekly Night Mode Schedule	x	x	
No-Answer Recall Timer	x			DIRECTORY DIALING	x	x		OFF-HOOK PREFERENCE			
No-Answer Retry Timer	x			DISABLE OUTGOING CO LINE ACCESS	x	x		Auto Feature Access	x	x	
Overflow Station Assignments	x			DISTINCTIVE RINGING				Auto Line Access	x	x	
Overflow Station Forwarding	x			User Selectable	x	x		Hot Line/Ring Down	x	x	
ACD/SMDR Interface Trace	x		RAN	On CO Lines	x	x		Intercom Access	x	x	
Recorded Announcements (RAN)	x			ONE-TIME DO NOT DISTURB	x	x		User Programmable Preference	x	x	
Supervisor Positions	x			DTMF SENDING	x	x		OFF-HOOK SIGNALING	x	x	
Supervisor/Agent Calls in Queue Display	x			EMERGENCY TRANSFER	x	x	PFTU/12v	OFF-HOOK VOICE OVER (OHVO)	x	x	
Wrap-Up Timer Per ACD Group	x			END-TO-END SIGNALING	x	x		ONE-TOUCH RECORDING	x	x	
AUTOMATIC LINE ACCESS	x	x		EXCLUSIVE HOLD	x	x		ON-HOOK DIALING	x	x	
AUTOMATIC NIGHT SERVICE	x	x		EXECUTIVE OVERRIDE	x	x		ON-LINE PROGRAMMING	x	x	
AUTOMATIC PAUSE INSERTION	x	x		EXECUTIVE/SECRETARY TRANSFER	x	x		PAGE/RELAY CONTROL	x	x	Misc SRNC Board
AUTOMATIC PRIVACY	x	x		EXTERNAL NIGHT RINGING	x	x	Paging Equip.	PAGING			
AUTOMATIC SELECTION	x	x		FLASH	x	x		External Paging	x	x	Paging Equip
BACKGROUND MUSIC	x	x	Music Source	FLASH ON INTERCOM	x	x		Internal Paging	x	x	Paging Equip
BATTERY BACK-UP (Memory)	x	x		FLASH RATES (Programmable)	x	x		Paging Access Restriction	x	x	
BUSY LAMP FIELD (BLF)	x	x		FLASH WITH SPEED DIAL	x	x		PAUSE TIMER	x	x	
CALL ANNOUNCE - PRIVACY	x	x		FLEXIBLE ATTENDANT	x	x		PBX DIALING CODES	x	x	
CALL BACK	x	x		FLEXIBLE BUTTON ASSIGNMENT	x	x		PERSONAL PARK	x	x	
CALL COST DISPLAY FEATURE	x	x		FLEXIBLE INTER-DIGIT TIMEOUT	x	x		POOL BUTTON OPERATION	x	x	
CALL COVERAGE FEATURE	x	x		FLEXIBLE PORT ASSIGNMENTS	x	x		PREFERRED LINE ANSWER	x	x	
CALL FORWARD: PRESET				FORCED ACCOUNT CODES	x	x		PRIVACY RELEASE			
ACD Groups	x			FORCED LEAST COST ROUTING (LCR)	x	x		Per CO Line Option	x	x	
Hunt Groups	x			FORWARD OVERRIDE	x	x		Per Station Option	x	x	
Off-Net	x			GROUND START TRUNKS ¹	x	x	CS Board	PRIVATE LINE	x	x	
Per CO Line	x			GROUP CALL PICK-UP	x	x		PULSE-TO-TONE SWITCHOVER	x	x	
Stations	x			GROUP LISTENING	x	x		RANGE PROGRAMMING	x	x	
UCD Groups	x			HANDSET RECEIVER GAIN (EKT)	x	x		REMOTE ADMINISTRATION			
VM Groups	x		VM System	HEADSET COMPATIBILITY	x	x	Headset	Database Upload/Download	x	x	PC/Term/Modem
CALL FORWARD: STATION				HEADSET MODE	x	x	Headset	REMOTE SYSTEM MONITOR AND MAINTENANCE			
All Calls	x	x		HEARING AID COMPATIBLE	x	x		Remote System Maintenance	x	x	PC/Term/Modem
Busy	x	x		HOLD PREFERENCE	x	x		Remote System Monitor	x	x	PC/Term/Modem
Busy/No Answer	x	x		HOLD RECALL	x	x		REPEAT REDIAL	x	x	
Follow-Me	x	x		HOT KEYPAD FEATURE	x	x		SAVE NUMBER REDIAL (SNR)	x	x	
No Answer	x	x		HOT LINE/RING DOWN	x	x		SIT COMPATIBILITY	x	x	2500 Type
Off-Net	x	x		HUNT GROUPS				SPEAKERPHONE	x	x	
CALL PARK	x	x		Hunt Group Chaining	x	x		STATION CLASS OF SERVICE	x	x	
CALL PICKUP				Pilot Hunting	x	x		STATION ID LOCK	x	x	
Directed Call Pick-Up	x	x		Station Hunting	x	x		SMDR FOR CALL ACCOUNTING	x	x	Printer/Terminal
Group Pick-Up	x	x		ICLID FEATURE				STATION RELOCATION FEATURE	x	x	
CALL TRANSFER	x	x		Calling Number/Name Display	x	x	Exec Keyset	STATION SPEED DIAL	x	x	
CALLER ENTERED ICLID DIGITS	x	x		Incoming Number/Name for SMDR Records	x	x	Exec Keyset	SYSTEM HOLD	x	x	
CALLING STATION TONE MODE OPTION	x	x		Unanswered Call Management	x	x	Exec Keyset	SYSTEM SPEED DIAL	x	x	
CAMP-ON	x	x		IDLE SPEAKER MODE	x	x		T-1 TRUNKING FEATURE ²	x	x	T-1 Board
CAMP-ON RECALL	x	x		INCOMING CO CALL TRANSFER	x	x		TEXT MESSAGING (Silent Response)	x	x	Exec Keyset
CANNED TOLL RESTRICTION	x	x		INCOMING CO LINES OFF-NET				TOLL RESTRICTION (Table Driven)	x	x	
CENTREX COMPATIBILITY				FORWARD (via Speed Dial)	x	x		TRANSFER RECALL	x	x	
Flex Button Programming	x	x		INTERCOM BUTTONS	x	x		UNIFORM CALL DISTRIBUTION (UCD)			
Off-Hook Preference	x	x		INTERCOM CALLING	x	x		Agent Queue Status Display	x	x	
Private Line Appearance	x	x		INTERCOM SIGNALING SELECT	x	x		Alternate UCD Group Assignments	x	x	
Programmable Flash Timer	x	x		ISDN (2.2) PRIMARY/BASIC/ADVANCED				Auto Wrap-Up with Timer	x	x	
Programming "S", "#", and				INTERFACE	x	x	PRI/BRI Board	Available/Unavailable Mode	x	x	
Hook-Flashes into Speed Dial	x	x		KEYSET MODE	x	x	CTI Box	Incoming CO Direct Ringing	x	x	
CENTREX/PBX TRANSFER	x	x		KEYSET SELF TEST	x	x	24-Btn/12-Btn	No-Answer Recall Timer	x	x	
CHAINING SPEED BINS	x	x		LAST NUMBER REDIAL (LNR)	x	x		No-Answer Retry Timer	x	x	
CO LINE ACCESS	x	x		LCD INTERACTIVE DISPLAY	x	x	Exec Keyset	Overflow Station Assignments	x	x	
CO LINE CLASS OF SERVICE	x	x		LEAST COST ROUTING (LCR)				Recorded Announcements (RAN)	x	x	RAN Devices
CO LINE CONTROL (Contact)	x	x	RGU & Ancillary	3-Digit Table	x	x		UNIVERSAL DAY/NIGHT ANSWER	x	x	
CO LINE GROUPS	x	x		6-Digit Table (Office Codes)	x	x		VOICE MAIL GROUPS			
CO LINE IDENTIFICATION	x	x		Daily Start Time Tables	x	x		Disconnect Signal - Pass Thru	x	x	VM System
CO LINE INCOMING RINGING ASSIGNMENT	x	x		Default LCR Database	x	x		In-Band Signaling Integration	x	x	VM System
CO LINE LOOP SUPERVISION	x	x		Exception Tables	x	x		LCD Message(s) Indication	x	x	VM System
CO LINE QUEUEING	x	x		Insert/Delete Tables	x	x		Message Waiting Indication	x	x	VM System
CO LINE RINGING OPTIONS	x	x		LCR Routing for Toll Information	x	x		Tone Mode Calling Option	x	x	VM System
CO RING DETECT	x	x		Route List Tables	x	x		Transfer/Forward	x	x	VM System
CONFERENCE				Weekly Time Tables	x	x		Transfer with ID Digits	x	x	VM System
Multi-Party Conference	x	x		LOCAL NUMBER/NAME TRANSLATION TABLE	x	x		VOLUME CONTROL BAR (DKT)	x	x	
Unsupervised Conference	x	x		LOOP BUTTON CO LINE ACCESS	x	x					
CONFERENCE ENABLE/DISABLE	x	x		MAILBOX BUTTON	x	x					
DATABASE PRINTOUT (Dump)	x	x	PC/Terminal	MEET ME PAGE	x	x					
DATABASE UPLOAD/DOWNLOAD	x	x	Printer/Terminal	MESSAGE WAITING	x	x					
DAY/NIGHT CLASS OF SERVICE (COS)	x	x	Printer/Terminal	MESSAGE WAITING REMINDER TONE	x	x					
DEFAULT BUTTON MAPPING	x	x		MESSAGES - PERSONALIZED							
DIAL BY NAME	x	x		Custom Messages	x	x	Exec Keyset				
DIAL PULSE SENDING	x	x		Date and Time Entry	x	x	Exec Keyset				
DIALING PRIVILEGES	x	x		Personalized Message Code on Flex Key	x	x	Exec Keyset				
DIRECT INWARD DIALING (DID) BOARD ²	x	x	DTMF Rcvr/DID	Scrollable Canned Messages	x	x	Exec Keyset				
				MUSIC ON HOLD	x	x	Music Source				

¹ Only supported on TRIAD3

² Not supported on TRIAD-S



STARPLUS Digital Key Telephones



Flexible, Modular Digital Communications

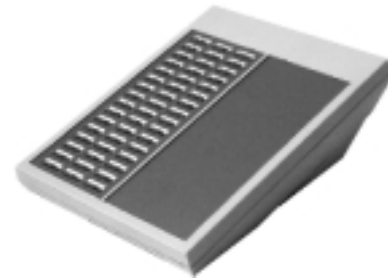
Fully digital architecture extends both digital voice transmission and system control to STARPLUS Digital Key Telephones. Modular hardware for providing cost-effective system customization and expansion is a design quality of STARPLUS Digital Systems. STARPLUS Digital Systems are fully compatible with STARPLUS Digital Key Telephones and industry standard single line telephones. Single line telephone ports also provide interface for Answering Machines, Fax Machines, Modems, Off-Premise Extension, Cordless Phones and Voice Mail Systems.

STARPLUS Digital Key Telephones are available in 3 models: Basic, Enhanced and Executive. The Basic model has 14 buttons for accessing features and CO lines. The Enhanced and Executive models provide full speakerphone operation and include 34 buttons for accessing features and CO lines. The Executive model has all the capabilities of the Enhanced model plus a 48 character, interactive display. All STARPLUS Digital Telephones are available in four designer colors; Charcoal Gray, Light Gray, Burgundy and Off-White. Constructed of high quality components, STARPLUS Digital Key Telephones yield trouble free operation for years to come.



Executive Digital	Part No. 1414-XX
8-pack	Part No. EP1414-XX
16-pack	Part No. PP1414-XX

The Executive model has all the capabilities of the Enhanced model plus 48 character interactive display.



Digital DSS Console	Part No. 1410-XX
(Expansion)	Part No. 1410-10

The Digital DSS/BLF Console provides 48 buttons (3 column of 16 buttons) and can access stations, direct appearing CO lines, or features that may be assigned to any of the flexible buttons.



Basic Digital	Part No. 1411-XX
----------------------	-------------------------

The Basic model has 14 buttons for accessing features and CO lines. Features including Call Announce Intercom with Handsfree Answerback on Intercom, Paging, and True Tone Dialing are standard.



Enhanced Digital	Part No. 1412-XX
8-pack	Part No. EP1412-XX
16-pack	Part No. PP1412-XX

The Enhanced Digital model provides Full Speakerphone operation and includes 34 buttons for accessing features and CO lines.



PC Interface	Part No. 1418-08
8-pack	Part No. EP1418-08
16-pack	Part No. PP1418-08

The STARPLUS PC interface model combines Full Speakerphone capability with CTI serial port connectivity to a PC.

PC Phone Kit	Part No. 1426-00
---------------------	-------------------------

Includes PC Interface phone (1418-08); requires 2.3 or higher software in KSU.

Miscellaneous Software, Documentation, and Spare Parts

STARPLUS®

PC Phone Software

For Windows. Requires PC Interface Phone (1418-08).

Single copy	Part No. 1426-01
5 Pack	Part No. 1426-05
10 pack	Part No. 1426-10
Site license	Part No. 1426-99

Optional Software Packages

1428 System ACD Software Package	1420-32
2856 System ACD Software Package	2820-32
4896 System ACD Software Package	4820-32

Documentation & Spare Parts

612 technical manual	61250-02
1428, 2856 manual	1450-02
4896 installation manual	4850-02
TAPI technical document	2850-50
Key station user guide (pkg. of 4)	1452-02
SLT user guide (pkg. of 4)	1453-02
Attendant user guide	1454-02
ACD user guide (pkg. of 4)	1455-02
Key phone overlay (pkg. of 25)	1460-T
DSS overlay	1461-T
Digital DSS underlay (pkg. of 100)	1461-99
Digital Key phone underlay (pkg. 100)	1462-99
12 ft. handset cord	P14109-XX
Handset cord 25 ft.	P14108-XX

(XX = Burgundy 60, Charcoal Gray 71)

Handset for digital phone	1464-XX
----------------------------------	----------------

612 System System supports up to 6 lines and 12 stations.

612 Promo Package **Part No. 61292-XX**

Equipped for four CO lines and eight stations. Consists of one KSU (61200-00) with basic FP3 software (61220-30) and two Enhanced model digital speakerphones (1412-XX).

Expansion Board **Part No. 1431-00**

Expands system to six line, 12 station capacity. (Two line, four station expansion board for external page port)

Expansion Board **Part No. 1433-00**

Expands system to six line, 12 station capacity. (Two line, four SLT station board)

DTMF Receiver **Part No. 2834-00**

Used for single line phone and DISA application. One DTMF receiver may be added to the system on the 1431-00 or 1433-00 module.

SLA/OPX 48v Adapter **Part No. 1484-00**

For 1 SLT/OPX port, 1400 ohm loop limit, registered for direct connection. SLA/OPX 48V adapter (1/2 amp per 1484-00) requires separate 48V DC power supply.

Relay/sensor module **Part No. 1435-00**

Provide 3 relays for application such as loud bell control, RAN start, paging & power fail transfer. Four per system.

1428 System

System supports applications that require up to 14 lines and 28 stations, plus Incoming Caller ID, Networking and Trunking and PC-based applications.

STARPLUS®**1428 Promo Package** **Part No. 1492-XX**

Equipped for four CO lines and eight stations, 1428 promotional package consists of one basic system KSU (1400-00) with basic FP3 software (1420-31), one Executive model digital speakerphone (1414-XX) and three Enhanced model digital speakerphones (1412-XX).

1428 All-Display Promo Package **Part No. 1495-XX**

Equipped for four CO lines and eight stations, 1428 promotional package consists of one basic system KSU (1400-00) with basic FP3 software (1420-31), one expansion KSU (1402-00), and six Executive model digital speakerphones (1414-XX).

1428 Key System Unit (KSU) **Part No. 1400-00**

Equipped for four line, eight station port.

Expansion KSU **Part No. 1402-00**

May be added to basic KSU as required to expand system to eight lines and sixteen stations.

2 x 4 Expander Module **Part No. 1431-00**

Add to basic or expansion KSU, as required.

4 x 8 Expander Module **Part No. 1432-00**

Add to expansion KSU, as required.

2 x 4 SLT Expander Module **Part No. 1433-00**

Add to basic or expansion KSU, as required. Requires RG and DTMF receiver.

ICLID Interface **Part No. 1480-00**

For 8 CO lines. Channels CO provided ICLID data into KSU.

ICLID Interface **Part No. 1440-00**

For 4 CO lines. Channels CO provided ICLID data into KSU.

Cable to connect ICLID Interface to KSU **Part No. 1481-00****1428 Demo Kit** **Part No. 1490-01**

Consists of one 4 x 8 basic system (1400-00), one burgundy Executive model digital speakerphone (1414-60), one light gray Executive model digital speakerphone (1414-70), one charcoal gray Enhanced model digital speakerphone (1412-71), one Demo Case with foam (SPDIG-CASE), one SNAP-TAPS (MALE), and one CABLE-SPD.

DTMF Receiver **Part No. 2834-00**

Used for single line telephone and DISA application. One DTMF receiver may be added to system on the 1431-00, 1402-00, 1432-00 or 1433-00 module.

1200-Baud Module **Part No. 2837-10**

Increases system's existing 300-baud modem to 1200 baud.

SLA/OPX 48v Adapter **Part No. 1484-00**

For 1 SLT/OPX port, 1400 ohm loop limit, registered for direct connect. SLA/OPX 48V adapter (1/2 amp per 1484-00) requires separate 48V DC PS.

RS232 I/O Module **Part No. 1437-00**

For 2 additional I/O ports.

Relay/Sensor Module **Part No. 1435-00**

Provides 3 relays for application such as loud bell control, RAN start, paging & power fail transfer. Four per system.

Digital Data Interface Unit **Part No. 1485-00**

For data transmission.

TAPI Kits

TAPI Service Provider Interface (SPI) allows you to take advantage of Microsoft's TAPI standard for communications between STARPLUS Digital system and PC software application packages such as ACT! 3.0, Microsoft Outlook, and Franklin Ascend.

STARPLUS TAPI Service Provider diskette **Part No. 2825-01****STARPLUS TAPI Kit** **Part No. 2825-10**

(software and document)

STARPLUS TAPI Kit (5-pack) **Part No. 2825-15****STARPLUS TAPI Kit (10-pack)** **Part No. 2825-20****STARPLUS TAPI Kit (site license)** **Part No. 2825-99**

Optional Software Packages

ACD software (FP3) **Part No. 1420-32****DBA kit off-line & upload** **Part No. 2850-02**

(Optional software to program system database.)

2856 System

System is designed for larger applications requiring up to 28 lines and 56 stations.

STARPLUS®

2856 Basic Package Part No. 2892-00

Basic package equipped for eight CO lines and 16 stations. Consists of one KSU with power supply (2800-00) and basic FP3 software (2820-31), one 2830-16 CPB/VCM processor, and two 4 x 8 boards 2831-00.

Expansion Boards

Optional as required to increase line and station capacity. System requires one or more DTMF receivers with DID or single line boards, dependent on traffic requirements.

Expansion Board Part No. 2831-00

(4 line, 8 station)

Expansion Board Part No. 2833-00

(4 line, 8 SLT board, need RGs for system)

Expansion Board Part No. 2831-10

(4 DID trunk, 8 key station board. Requires 48v DC PS.)

ICLID Interface Part No. 1480-00

For 8 CO lines, channels CO provided ICLID data into KSU.

ICLID Interface Part No. 1440-00

For 4 CO lines, channels CO provided ICLID data into KSU.

Cable to connect ICLID Interface to KSU Part No. 1481-00

DTMF Receiver Part No. 2834-00

For single line phone and DISA application. One may be added to system on the 2831-00 or 2833-00 module.

2856 KSU with Power Supply Part No. 2800-00

As required for replacement or spare. Both system components are included in the basic package.

CPB/VCM Processor Part No. 2830-16

SLA/OPX 48v Adapter Part No. 1484-00

Adapter (1/2 amp per 1484-00) requires separate 48v DC power supply. For one SLT/OPX port, 1400 ohm loop limit, registered for direct connect.

RS-232 I/O Module Part No. 2837-00

For two additional I/O ports.

Relay/Sensor Module Part No. 1435-00

Four per system. Provides 3 relays for application such as loud bell control, RAN start, paging & power fail transfer.

Digital Data Interface Unit Part No. 1485-00

For data transmission.

Ferrite Kit Part No. 22830

Needed to expand number of stations and lines beyond four boards.

TAPI Kits

TAPI Service Provider Interface (SPI) allows you to take advantage of Microsoft's TAPI standard for communications between STARPLUS Digital system and PC software application packages such as ACT! 3.0, Microsoft Outlook, and Franklin Ascend.

Starplus TAPI Service Provider diskette Part No. 2825-01

Starplus TAPI Kit Part No. 2825-10

(software and document)

Starplus TAPI Kit (5-pack) Part No. 2825-15

Starplus TAPI Kit (10-pack) Part No. 2825-20

Starplus TAPI Kit (site license) Part No. 2825-99

Optional Software Packages

ACD software (FP3) Part No. 2820-32

DBA kit Part No. 2850-02

Optional software to program system database off-line for upload.



4896 System

System supports up to 216 Universal Ports
(96 CO lines maximum).

STARPLUS®

4896 Basic Package Part No. 4892-00

Basic system package, equipped for 12 CO lines and 12 stations, consists of one KSU (4800-00), one power supply (4871-00), one CPU (4830-00) with basic system FP3 software (4820-31), one VCB (4830-10), one I/O cable (4873-10), one CO line board (4831-00), and one 12 digital key station port (4832-00).

System Memory Expansion Part No. 4830-20

Required when using 48 lines, 96 stations, verified account codes, DID, or T-1. Other hardware or software may be required.

Expansion Boards

As required for additional line and station capacity. System requires one or more DTMF receivers with DID or single line boards, dependent on traffic requirements. When ordering 4831-30 or 4831-40, you will need D4\AMI, 2 wire E&M, DTMFWINK.

CO line board Part No. 4831-00 12

Digital station port board Part No. 4832-00 12

SLT board Part No. 4833-00 12

Needs power supply and RG.

DID line board Part No. 4831-10 12

Requires 48V PS & uses DTMF receivers.

T-1 kit, T-1 card, CSU & cable Part No. 4831-30

T-1 card kit (no CSU) Part No. 4831-40

6 x 6 combo board Part No. 4832-10

Provides 6 digital stations & 6 DTMF receivers for system resources.

ICLID Interface Part No. 1480-00

For 8 CO lines, channels CO provided ICLID data into KSU.

ICLID Interface Part No. 1440-00

For 4 CO lines. Channels CO-provided ICLID data into KSU.

Cable to connect ICLID Interface to KSU Part No. 1481-00

Quad DTMF Receiver Part No. 4834-00

Required for T-1, DID, E&M, DISA or SLT board. Mounts on SLT board (4833-00) only.

SLA/OPX 48v Adapter Part No. 1484-00

Adapter (1/2 amp per 1484-00) requires separate 48v DC power supply. For one SLT/OPX port, 1400 ohm loop limit, registered for direct connect.

Relay/Sensor Module Part No. 1435-00

Provides three relays for applications such as loud bell control, RAN start, paging, and power fail transfer.

Digital Data Interface Unit Part No. 1485-00

For data transmission.

TAPI Kits

TAPI Service Provider Interface (SPI) allows you to take advantage of Microsoft's TAPI standard for communications between STARPLUS Digital system and PC software application packages such as ACT! 3.0, Microsoft Outlook, and Franklin Ascend.

STARPLUS TAPI Service Provider diskette Part No. 2825-01

STARPLUS TAPI Kit Part No. 2825-10

(software and document)

STARPLUS TAPI Kit (5-pack) Part No. 2825-15

STARPLUS TAPI Kit (10-pack) Part No. 2825-20

STARPLUS TAPI Kit (site license) Part No. 2825-99

Power supply. Part No. 4871-00

Second power supply needed when equipping card slots 10-18.

Optional software packages

ACD software (FP3) Part No. 4820-32

DBA kit. Part No. 2850-02

Optional software to program system database off-line for upload.

Features & Additional Equipment

STARPLUS®

SOFTWARE PACKAGES

FEATURE	612	1428, 2856 & 4896 STD ACD
ACCOUNT CODES.....	X	X
ACCOUNT CODES.....	X	X
(Verified)/Traveling COS (FP3)*		
ATTENDANT RECALL.....	X	X
AUTOMATIC CALL BACK TIMER.....	X	X
AUTOMATIC CALL DISTRIBUTION (ACD):		
ACD Event Trace.....	X	X
Agent Positions.....	X	X
Alternate ACD Group Assignments.....	X	X
Group Member Status.....	X	X
Guaranteed Message Announcement*.....	X	X
Incoming CO Direct Ringing.....	X	X
No-Answer Recall Timer.....	X	X
No-Answer Retry Timer.....	X	X
Overflow Station Assignments.....	X	X
Recorded Announcements (RAN) Device(s)*.....	X	X
Supervisor Positions.....	X	X
Supv/Agent Calls in Queue Display.....	X	X
Wrap-Up Timer Per ACD Group.....	X	X
AUTOMATIC LINE ACCESS.....	X	X
AUTOMATIC NIGHT SERVICE.....	X	X
AUTOMATIC PAUSE INSERTION WITH.....	X	X
SPEED DIAL.....	X	X
AUTOMATIC PRIVACY.....	X	X
AUTOMATIC SELECTION.....	X	X
BACKGROUND MUSIC SOURCE.....	X	X
BATTERY BACKUP (memory).....	X	X
BUSY LAMP FIELD (BLF).....	X	X
CALL ANNOUNCE (privacy).....	X	X
CALL BACK.....	X	X
CALL COST DISPLAY.....	X	X
CALL COVERAGE.....	X	X
CALL FORWARD: PRESET:		
ACD Groups.....	X	X
Hunt Groups.....	X	X
Off-Net.....	X	X
Per CO Line.....	X	X
Stations.....	X	X
UCD Groups.....	X	X
Voice Mail Groups.....	X	X
CALL FORWARD STATION:		
All Calls.....	X	X
Busy.....	X	X
Busy/No Answer.....	X	X
Follow-Me.....	X	X
No Answer.....	X	X
Off-Net.....	X	X
CALL PARK.....	X	X
CALL PICK-UP:		
Directed Call Pick-up.....	X	X
Group Pick-up.....	X	X
CALL TRANSFER.....	X	X
CALLER ENTERED ICLID DIGITS*.....	X	X
CALLING STATION TONE MODE.....	X	X
CAMP-ON.....	X	X
CAMP-ON RECALL.....	X	X
CANNED TOLL RESTRICTION.....	X	X
CENTREX COMPATIBILITY:		
Flex Button Programming.....	X	X
Off-Hook Preference.....	X	X
Private Line Appearance.....	X	X
Programmable Flash Timer.....	X	X
"Programming *, #, and Hook- Flashes into Speed Dial"	X	X
CENTREX/PBX TRANSFER.....	X	X
CHAINING SPEED BINS.....	X	X
CO LINE ACCESS.....	X	X
CO LINE CLASS OF SERVICE.....	X	X

SOFTWARE PACKAGES

FEATURE	612	1428, 2856 & 4896 STD ACD
CO LINE CONTROL (CONTACT)*.....	X	X
CO LINE GROUPS.....	X	X
CO LINE IDENTIFICATION.....	X	X
CO LINE INCOMING RINGING ASSIGNMENT.....	X	X
CO LINE LOOP SUPERVISION.....	X	X
CO LINE QUEUE.....	X	X
CO LINE RINGING OPTIONS.....	X	X
CO RING DETECT.....	X	X
CONFERENCE:		
Add-On.....	X	X
Multi-Line.....	X	X
Unsupervised.....	X	X
CONFERENCE ENABLE/DISABLE.....	X	X
DATA*.....	X	X
DATABASE PRINTOUT (dump).....	X	X
DATABASE UPLOAD/DOWNLOAD.....	X	X
DAY/NIGHT CLASS OF SERVICE (COS).....	X	X
DEFAULT BUTTON MAPPING.....	X	X
DIAL BY NAME.....	X	X
DIAL PULSE SENDING.....	X	X
DIALING PRIVILEGES.....	X	X
DIRECT INWARD DIALING (DID).....	X	X
(SPD 2856, 4896)*		
DIRECT INWARD SYSTEM ACCESS (DISA):		
CO Line Group Access.....	X	X
DISA Call Forwarding.....	X	X
Programmable Access.....	X	X
Station Access.....	X	X
Trunk-to-Trunk.....	X	X
DIRECT STATION SELECTION.....	X	X
DIRECT TRANSFER MODE.....	X	X
DIRECTED CALL PICK-UP:		
Station.....	X	X
UCD Groups.....	X	X
DIRECTORY DIALING.....	X	X
DISABLE OUTGOING CO LINE ACCESS.....	X	X
DISTINCTIVE RINGING (USER SELECTABLE).....	X	X
DISTINCTIVE CO LINE RINGING.....	X	X
DO NOT DISTURB (DND):		
One-Time Do Not Disturb.....	X	X
DTMF SENDING.....	X	X
END TO END SIGNALLING.....	X	X
EXCLUSIVE HOLD.....	X	X
EXECUTIVE OVERRIDE.....	X	X
EXECUTIVE/SECRETARY TRANSFER.....	X	X
EXTERNAL NIGHT RINGING:*.....	X	X
Paging Equipment*.....	X	X
FLASH.....	X	X
FLASH ON INTERCOM.....	X	X
FLASH RATES (PROGRAMMABLE).....	X	X
FLEXIBLE ATTENDANT.....	X	X
FLEXIBLE BUTTON ASSIGNMENT.....	X	X
FLEXIBLE INTER-DIGIT TIMEOUT.....	X	X
FLEXIBLE PORT ASSIGNMENTS.....	X	X
FORCED ACCOUNT CODES.....	X	X
FORCED LEAST COST ROUTING (LCR).....	X	X
FORWARD OVERRIDE.....	X	X
GROUP CALL PICK-UP.....	X	X
GROUP LISTENING.....	X	X
HANDSET RECEIVER GAIN.....	X	X
HEADSET COMPATIBILITY.....	X	X
HEADSET MODE.....	X	X
HEARING AID COMPATIBLE.....	X	X
HOLD PREFERENCE.....	X	X
HOLD RECALL.....	X	X
HOT LINE/RING DOWN.....	X	X

Features & Additional Equipment

STARPLUS®

SOFTWARE PACKAGES

FEATURE	612	1428, 2856 & 4896 STD ACD
HUNT GROUPS:	X	X
Chaining	X	X
Pilot	X	X
Station	X	X
ICLID:	X	X
Calling Number/Name Display	X	X
Incoming Number/Name for SMDR Records	X	X
Unanswered Call Management	X	X
IDLE SPEAKER MODE	X	X
INCOMING CO CALL TRANSFER	X	X
INCOMING CO LINES OFF-NET FORWARD	X	X
VIA SPEED DIAL	X	X
INTERCOM BUTTON(S)	X	X
INTERCOM CALLING	X	X
INTERCOM SIGNALING SELECT	X	X
KEYSET MODE (FP3)	X	X
KEYSET SELF TEST - EXECUTIVE KTU	X	X
LAST NUMBER REDIAL (LNR)	X	X
LCD INTERACTIVE DISPLAY*	X	X
LEAST COST ROUTING (LCR):	X	X
3-Digit Table	X	X
6-Digit Table	X	X
Daily Start Time Tables	X	X
Default LCR Database	X	X
Exception Tables	X	X
Insert/Delete Tables	X	X
LCR Routing for Toll Information	X	X
Route List Tables	X	X
Weekly Time Tables	X	X
LOCAL NUMBER/NAME TRANSLATION TABLE	X	X
LOOP BUTTON CO LINE ACCESS	X	X
MAILBOX BUTTON	X	X
MEET ME PAGE	X	X
MESSAGE WAITING	X	X
MESSAGE WAITING REMINDER TONE	X	X
MESSAGES - PERSONALIZED:	X	X
Custom	X	X
Date and Time Entry	X	X
Message Code on a Flex Key	X	X
Scrollable Canned Messages	X	X
MUSIC ON HOLD	X	X
MUTE KEY	X	X
NAME IN DISPLAY	X	X
NAME/NUMBER DISPLAY AT IDLE	X	X
NIGHT SERVICE	X	X
NIGHT SERVICE MODE:	X	X
Automatic Night Mode Operation	X	X
External Night Ringing*	X	X
Manual Operation	X	X
Night Class of Service (COS)	X	X
Night Ringing Assignments	X	X
Universal Night Answer (UNA)	X	X
Weekly Night Mode Schedule	X	X
OFF-HOOK PREFERENCE:	X	X
Auto Feature Access	X	X
Auto Line Access	X	X
Hot Line/Ring Down	X	X
Intercom Access	X	X
User Programmable Preference	X	X
OFF-HOOK SIGNALLING	X	X
OFF-HOOK VOICE OVER (OHVO)	X	X
OFF-PREMISE EXTENSIONS (OPX)*	X	X
ON HOOK DIALING	X	X
ON LINE PROGRAMMING	X	X
PAGE/RELAY CONTROL*	X	X

SOFTWARE PACKAGES

FEATURE	612	1428, 2856 & 4896 STD ACD
PAGING:	X	X
External*	X	X
Internal	X	X
Access Restriction	X	X
PAUSE TIMER	X	X
PBX DIALING CODES	X	X
PERSONAL PARK	X	X
POOL BUTTON OPERATION	X	X
PREFERRED LINE ANSWER	X	X
PRIVACY RELEASE:	X	X
Per CO Line Option	X	X
Per Station Option	X	X
PRIVATE LINE	X	X
PULSE-TO-TONE SWITCHOVER	X	X
RANGE PROGRAMMING	X	X
REMOTE ADMINISTRATION:	X	X
Database Upload/Download	X	X
REMOTE SYSTEM MONITOR & MAINTENANCE	X	X
REPEAT REDIAL	X	X
SAVE NUMBER REDIAL (SNR)	X	X
SINGLE LINE TELEPHONE (SLT)	X	X
COMPATIBILITY*	X	X
SPEAKERPHONE	X	X
STATION CLASS OF SERVICE (COS)	X	X
STATION ID LOCK	X	X
STATION MESSAGE DETAILED RECORDING*	X	X
STATION RELOCATION	X	X
STATION SPEED DIAL	X	X
SYSTEM HOLD	X	X
SYSTEM SPEED DIAL	X	X
TEXT MESSAGING (SILENT RESPONSE)	X	X
TOLL RESTRICTION (TABLE DRIVEN)	X	X
TRANSFER RECALL	X	X
UNIFORM CALL DISTRIBUTION (UCD):	X	X
Agent Queue Status Display	X	X
Alternate UCD Group Assignments	X	X
Auto Wrap-Up with Timer	X	X
Available/Unavailable Mode	X	X
Incoming CO Direct Ringing	X	X
No-Answer Recall Timer	X	X
No-Answer Retry Timer	X	X
Overflow Station Assignments	X	X
Recorded Announcements (RAN)*	X	X
UNIVERSAL DAY/NIGHT ANSWER (UDA/UNA)	X	X
VOICE MAIL GROUPS (VM):	X	X
Disconnect Signal (pass through)	X	X
In-Band Signaling Integration	X	X
LCD Message(s) Indication	X	X
Message Waiting Indication	X	X
Tone Mode Calling Option	X	X
Transfer with ID Digits	X	X
Transfer/Forward	X	X
VOLUME CONTROLS	X	X

*Optional or External Equipment Required

Digital Hybrid Systems

STARPLUS[®]
DHS[™]



Your business needs a reliable telephone system that incorporates today's sophisticated digital technology with features that make business communications easy and efficient. You don't

have to spend a fortune on complicated applications you don't need, and cumbersome equipment that requires an advanced degree to use. The solution is the STARPLUS DHS — the Digital Hybrid System designed to meet the communication needs of small businesses.

Engineered for Small Business

The STARPLUS DHS combines performance, quality and value to provide small businesses with a communications system they can count on. System size starts from 3 lines and 8 telephones with flexible expansion up to 18 lines and 48 telephones. This is a telephone system specifically engineered for small business with features designed to maximize employee productivity.

DHS System Telephones

Enhanced speakerphone Part No. **SP7312-XX**
with 20 flexible buttons.

Executive speakerphone Part No. **SP7314-XX**
with interactive display and 20 flexible buttons.

DHS 3 x 8 Package Part No. **SP7192-XX**

STARPLUS DHS 3 x 8 package consists of one 3 x 8 KSU (SP7000-00), three Enhanced Speakerphones (SP7312-XX), and one Executive Display Speakerphone (SP7314-XX).

DHS 6 x 16 Package Part No. **SP7292-XX**

STARPLUS DHS 6 x 16 package consists of one 3 x 8 KSU (SP7000-00), one Expansion Board (SP7100-00), three Enhanced Speakerphones (SP7312-XX), and one Executive Display Speakerphone (SP7314-XX).

DHS 6 x 16 Jumbo Package Part No. **SP7492-XX**

STARPLUS DHS 6 x 16 jumbo package consists of one 3 x 8 KSU (SP7000-00), one Expansion Board (SP7100-00), and eight Executive Display Speakerphones (SP7314-XX).

DHS-E DSS Console Part No. **SP7310-XX**

DHS-E Package Part No. **SP7592-XX**

Consists of one 9 x 16 promotional package KSU (SP7000-10), one 3 x 8 Expansion Board (SP7100-00), and ten Executive Display Speakerphones (SP7314-XX).

Features that are Actually Easy to Use

Don't be intimidated when we tell you that the STARPLUS DHS includes over 200 system and station features. We know that having loads of features doesn't help if they're too complicated to use. So the STARPLUS DHS actually makes features easy to access through both the large LCD screen's menu prompts and soft keys which can be programmed with specific features so each user can customize to meet their needs.

Analog Adapters Provide Greater Expandability

With the DHS, you can use the optional analog adapters to connect any single-line device such as a fax, modem, credit card verifier, cordless phone or answering machine to the digital telephone's ADP jack. Each device has a separate extension number so you can use them simultaneously. Analog adapters also provide the flexibility to split the digital channel and serve two single-line devices with one digital port.

DHS Demo Kit Part No. **SP7090-00**

STARPLUS DHS demo kit consists of one 3 x 8 KSU (SP7000-00), one package of four user guides (SP7052-00), one charcoal Enhanced Speakerphone (SP7312-71), one charcoal Executive Speakerphone (SP7314-71), one off-white Executive Speakerphone (SP7314-08), one demo case with foam (CASE-DHS), one cable (CABLE-DHS), and one SNAP-TAPS (MALE).

Feature Package 2

Feature Package 2 upgrade for the STARPLUS DHS provides system with answering machine emulation (call screening), one-touch call record to voice mail, distinctive ringing on CO lines, night transfer, call forward busy/no answer, Caller ID, Caller ID unanswered call review and Caller ID SMDR output.

Feature Package 2 Upgrade Kit Part No. **SP7093-02**

Feature Package 2 Software Part No. **SP7020-20**

Documentation & Spare Parts

3 x 8 KSU	SP7000-00
Technical manual	SP7050-03
User guide	SP7052-10
3 x 8 expansion board	SP7100-00
6 port CO line card	SP7100-10
Option module	SP7110-00
2 port analog adapter	SP7420-00
2 port analog expander	SP7440-00
Pedestal	SP7463-XX
Handset	SP7464-XX
Handset cord	SP7466-XX
Battery backup unit	VC61101
4 port ICLID box	1440-00
ICLID Interface	1480-00
Cable for ICLID Interface	SP7081-10

STARPLUS Electronic Key Systems



Telephone Models



Basic Key Part No. SP61610-XX (1)

The STARPLUS Basic Key model is a 14 button Key telephone that provides such features as Call Announce Intercom and On Hook Dialing.



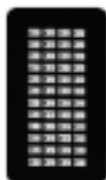
Enhanced Key Part No. SP61612-XX (1)

The STARPLUS Enhanced model adds Full Speakerphone capability and has 30 buttons for accessing line and features.



Executive Key Part No. SP61614-XX (1)

The STARPLUS Executive Key model combines the Basic and Enhanced model functionality with a 48 character interactive display.



DSS/DLS Console Part No. SP2410-XX

The STARPLUS Electronic Key DSS/DLS Console has 48 programmable buttons. (1224 only)

Ash phone box Part No. SP61616-44

Requires 1 station port.

Wall mount kit Part No. SP61640-XX

Optional, as required.

Today's business environment demands both dependability and functionality from telephone communications systems. STARPLUS meets this challenge with reliable systems that provide a wide range of features and capabilities. STARPLUS Key Telephone Systems are designed to accommodate businesses requiring from 3 to 12 stations.

The microprocessor-based architecture of the STARPLUS Electronic Key System combines digital control and stable, trouble free operation. A wide variety of features are found in every system which add sophistication only found in larger telephone communications systems.

STARPLUS Electronic Key Telephones are available in three models; Basic, Enhanced and Executive. STARPLUS Key Telephones are as pleasing to the eye as they are functional. Each model comes in five designer colors; Burgundy, Black, Gray, Ash and White.

System Features

- Call Announce Intercom
 - Call Forward, All Calls
 - Camp-On & Call Transfer
 - Conferencing Multi-Line & Add-On
 - Do Not Disturb Mode
 - Internal Paging - Zone or All Call
 - Message Waiting with Reminder Tone
 - * Station Speed Dialing
 - Universal Night Answer
 - ◆ User Programmable Name and Display System Administration
 - ** Attendant Programmable System Speed Dialing
 - Key Telephone Programmable System Database
 - On Line System Programming
 - Communications Cost Control
 - Account Codes for SMDR
 - CENTREX/PBX Dialing Codes
 - SMDR Output for Call Accounting
 - Toll Restriction/Dialing Privileges
 - Customized Call Processing
 - Automatic Night Model
 - Executive/Secretary Transfer
 - Music On Hold/Background Music Interface
 - Attendant Control
 - Night Service Control
 - Optional Features
 - External Paging Interface
 - Phone Box/Door Intercom Box
 - Single Line Telephone Interface
-
- * Station Speed dial 308EX (10 numbers)
616 Flex, 1224EX (20 numbers)
 - 616 Flex, 1224EX only
 - ◆ 616 Flex only
 - ** System Speed Dial
308EX, 616 Flex, 1224EX (40 numbers)

308 EX System

STARPLUS
Electronic Key & Hybrid Systems



System supports up to 3 lines and 8 stations. With the features normally found in larger systems, the 308 surpasses the requirements of small business applications. It is the perfect starting point for any small business.

308EX System Capabilities

- 3 CO/PBX/CENTREX Lines (loop start)
- 8 Electronic Station Ports
- 3 Intercom Talk Paths
- 40 System Speed Dial Bins (16 digits each)
- 10 Station Speed Dial Bins (16 digits each)
- 1 External Page Port (unamplified, 2-way)

FCC Registration

- FCC #: DLP82V-72088-KF-E
- Ring Equivalence: 0.4B

Power Requirements

- 117V AC +/-10%, 60 HZ Single Phase

Environmental Requirements

- Temperature: 32° to 122°F
(Optimum: 60° to 80°F)
- Humidity: 5% to 95% (non-condensing)

Station Cable Lengths

(Maximum: 2 Pair Twisted Cable)

- 1000 ft. of 26 AWG Cable
- 1500 ft. of 24 AWG Cable
- 2000 ft. of 22 AWG Cable

Physical Characteristics

- KSU Shipping Weight: 13 lbs.
- KSU Box Dimensions: 15.5" x 11.5" x 3"

Documentation (with KSU)

- 1 Installation Manual
- 1 package of User Guides (8 to a pkg.)

308 Promo Package Part No. SP30897-XX

The 308 promotional package is equipped for three lines and eight stations and consists of one KSU (SP30800-00) and three Enhanced model speakerphones (SP61612-XX).

308 Key System Unit (KSU) Part No. SP30800-00

The 308 KSU is required and equips a three line, eight station system.

Battery charging unit Part No. VC61101

Optional, as required. Batteries not included.

Single Line Adaptor (SLA) Part No. SP584-00

For 2 SLT ports.

Documentation & Spare Parts

308EX installation manual SP30850-00

616 Flex installation manual SP61650-10

1224EX installation manual SP1250-00

308EX, 616 FLEX user guide, SP61652-00

Basic key phone (pkg. of 8)

1224EX user guide (pkg. of 8) SP1252-00

308EX user guide SP61654-00

Enhanced key phone (pkg. of 8)

616 Flex user guide, SP61654-10

Enhanced/Executive key phone (pkg. of 8)

K style handset SP61660-XX

Button caps (pkg. of 9 clear, 1 red) SP61662-00

Directory card SP61664-00

for Basic key phone (pkg. of 100)

1224EX designation tabs SP1260-00

for Enhanced/Executive phones (pkg. of 100)

DSS console user guide (pkg. of 8) SP2453-00

Designation tabs SP2460-00

for key phones (pkg. of 100)

Designation tabs SP2462-00

for DSS/DLS console (pkg. of 100)

Blank designation tabs SP61664-01

for Enhanced phone (pkg. of 100)

Handset cord, 12 ft. SP61666-XX

(gray or burgundy only)

Handset cord 25 ft. P14108-XX

(gray or burgundy only)

Directory window SP61668-00

for Basic key phone (pkg. of 25)

616 Flex System

STARPLUS
Electronic Key & Hybrid Systems



System supports up to 6 lines and 16 stations. Even more features and display telephone functions are included to accommodate the larger office environment.

616 Flex System Capabilities

- 6 CO/PBX/CENTREX Lines (loop start)
- 16 Electronic Station Ports
- 6 Intercom Talk Paths
- 40 System Speed Dial Bins (16 digits each)
- 20 Station Speed Dial Bins (16 digits each)
- 1 SMDR, RS-232 Serial Port (optional)
- 1 External Page Port (unamplified, 2-way)

FCC Registration

- FCC #: DLP82V-72088-KF-E
(Direct CO Access Buttons)
- FCC #: DLP82V-60903-MF-E
(Pooled Group CO Access)
- Ring Equivalence: 0.4B

Power Requirements

- 117V AC +/-10%, 60 HZ Single Phase

Environmental Requirements

- Temperature: 32° to 104°F
(Optimum: 60° to 80°F)
- Humidity: 5% to 90% (non-condensing)

Station Cable Lengths

(Maximum: 2 Pair Twisted Cable)

- 800 ft. of 26 AWG Cable
- 1000 ft. of 24 AWG Cable
- 1500 ft. of 22 AWG Cable

Physical Characteristics

- KSU Shipping Weight: 14 lbs.
- KSU Box Dimensions: 22" x 14" x 2.5"

Documentation (with KSU)

- 1 Installation Manual
- 1 package of User Guides (8 to a pkg.)

616 Promo Package Part No. SP61697-XX

The 616 promotional package is equipped for six lines and 16 stations and consists of one KSU (SP61600-10), one Program Cartridge (SP61620-03) and four Enhanced model Speakerphones (SP61612-XX).

616 Key System Unit (KSU) Part No. SP61600-10

The 616 KSU is required and equips a six line, 16 station system.

Generic III Program Cartridge Part No. SP61620-03

One required.

Real Clock Unit (RCU) Part No. SP61630-00

One required for display phones and SMDR.

Serial Interface Upgrade (SIU) Part No. SP61632-00

One required for SMDR.

Battery Charging Unit Part No. VC61101

Optional. Batteries not included.

Single Line Adaptor (SLA) Part No. SP584-00

For 2 SLT ports.

1224 EX System

STARPLUS
Electronic Key & Hybrid Systems



System provides 12 lines and 24 stations to accommodate an even larger office environment.

System Capabilities

- 12 CO/PBX/CENTREX Lines (loop start)
- 24 Electronic Station Ports
- 8 Intercom Talk Paths
- 40 System Speed Dial Bins (16 digits each)
- 20 Station Speed Dial Bins (16 digits each)
- 1 SMDR, RS-232 Serial Port (optional)
- 1 External Page Port (unamplified, 2-way)

FCC Registration

- FCC #: DLP82V-19891-KF-E
(Direct CO Access Buttons)
- FCC #: DLP82V-19889-MF-E
(Pooled Group CO Access)
- Ring Equivalence: 0.5B

Power Requirements

- 117V AC +/-10%, 60 HZ Single Phase

Environmental Requirements

- Temperature: 32° to 122°F
(Optimum: 60° to 80°F)
- Humidity: 5% to 95% (non-condensing)

Station Cable Lengths

(Maximum: 2 Pair Twisted Cable)

- 500 ft. of 26 AWG Cable
- 1000 ft. of 24 AWG Cable
- 1500 ft. of 22 AWG Cable

Physical Characteristics

- KSU Shipping Weight: 20 lbs.
- KSU Box Dimensions: 22" x 13.5" x 3"

Documentation (with KSU)

- 1 Installation Manual
- 2 packages of User Guides (8 to a pkg.)

1224 Promo Package

Part No. SP1297-XX

The 1224 promotional package is equipped for 12 lines and 24 stations and consists of one KSU (SP1200-00), one Program Cartridge (SP1220-01) and five Enhanced model Speakerphones (SP61612-XX).

1224 Key System Unit (KSU)

Part No. SP1200-00

The 1224 KSU is required and equips a 12 line, 24 station system.

Generic III Program Cartridge

Part No. SP1200-01

One required.

Real Clock Unit (RCU)

Part No. SP61630-00

One required for display phones and SMDR.

Serial Interface Upgrade (SIU)

Part No. SP61632-00

One required for SMDR.

Battery Charging Unit

Part No. VC61101

Optional. Batteries not included.

Single Line Adaptor (SLA)

Part No. SP584-00

For 2 SLT ports.

2700 Series

STARPLUS®



The Affordable One and Two Line Commercial Telephone Solution.

Technically advanced with a stylish, compact design, the STARPLUS 2700 Series is the ideal choice for today's business or hospitality environment. Whether you are a hotel, university or business office, one of the five STARPLUS 2700 telephone models is sure to meet your needs. Adding phones to your current system is a snap with STARPLUS 2700 telephones because they are compatible with nearly any PBX, key telephone system, or Centrex service.

All the Features You Need

All five 2700 models are FCC registered as well as hearing aid and American Disability Act (ADA) compliant. Common features include handset volume button, right side data jack, message waiting light, redial button, Flash button, desk/wall mount, and ringer control switch.

Special Features for Hospitality Models

The 2702 and 2704 models in the series are specifically designed for hotels, motels, and resorts. Special features added for the hospitality models include a hidden programmable feature button located under the overlay which reduces guests access to programming, and a hi/lo ringer switch that eliminates the ability to permanently turn off the phone's ringer.



STARPLUS 2701 Part No. 2701-XX

Features include: one line, message wait lamp, flash button, redial button, off/hi/lo ringer adjustment, handset volume button, data jack and a lead control. Available in off white or black.



STARPLUS 2702 Part No. 2702-08

(Hospitality Model) Features include: one line speakerphone with mute, speaker volume control, message wait lamp, flash button, hold button, redial button, 10 programmable flexible buttons, hidden programming button, hi/lo ringer control, data jack and a lead control. Available in off white.



STARPLUS 2703 Part No. 2703-XX

Features include: one line speakerphone with mute, speaker volume control, message wait lamp, flash button, hold button, redial button, 10 programmable flexible buttons, off/hi/lo ringer control, data jack, and a lead control. Available in off white or black.



STARPLUS 2704 Part No. 2704-08

(Hospitality Model) Features include: two line speakerphone with mute, speaker volume control, message wait lamp, flash button, hold button, redial button, conference button, 10 programmable flexible buttons, hidden programming button, hi/lo ringer control for each line and data jack. Available in off white.



STARPLUS 2705 Part No. 2705-XX

Features include: two line speakerphone with mute, speaker volume control, message wait lamp, flash button, hold button, redial button, conference button, 10 programmable flexible buttons, off/hi/lo ringer control for each line and data jack. Available in off white or black.

PC Phone for STARPLUS Digital Systems STARPLUS®



Innovative use of CTI Technology is one way you can deliver service to your customers faster, more accurately and more cost effectively than ever before. And this means a big difference in time, money and value; putting you miles ahead of your competition.

STARPLUS Digital Systems unite your two most essential business tools — the PC and the telephone, to help you manage your communications better, increase efficiency and provide superior customer service.

STARPLUS Caller ID and PC Phone are two CTI solutions that can help you expand the potential of your STARPLUS digital telephone system.

Desktop Connectivity and Control

With STARPLUS Caller ID Integration, you can combine telephone company Caller ID data with system call processing. The caller's name, telephone number and even customer profile can be displayed — all before you answer the call. You can then personalize your greeting, ensuring you have all the data at your fingertips to help the customer, and transfer the call to the appropriate representative or group. STARPLUS PC Phone software is a Windows® based software application that ports all the functions of your telephone onto the computer. With PC Phone, you can answer your telephone, process calls, access voice mail and system features with a simple point and click of a mouse.

STARPLUS PC Phone Applications

With PC Phone, you can move all the functions of your STARPLUS Digital Telephone onto your computer. It's simple to install — just plug the telephone into the COMM port of your computer and load the PC Phone for Windows software.

PC Phone's screen incorporates both the fixed and flexible buttons of the telephone, a dial pad, call status display, a directory window and dial window. To access features, dial out and process incoming calls you just point and click.

Outbound PC Dialing

For dialing out, you can key in the number on the keyboard, use the mouse or type in a name from the directory. PC Phone instantly dials the number for you. You can also connect to any Personal Information Management and Contact Management software programs for outdialing.

PC Attendant

To signal an incoming call, the PC Phone icon flashes — even while you're working in another Windows application. Click on the icon and you are instantly transferred to the PC Phone screen, where you can answer, forward or transfer the call with a single mouse click.

Unified Message Handling

Handle your voice mail through PC Phone's message window! Point and click to save, forward, delete, fast-forward and rewind messages. Plus, PC Phone uses Caller ID information to list and identify messages for processing — before you answer them.

Turn to pages 11 & 12 for ordering information on STARPLUS PC Interface Telephone and PC Phone Software.

TRIAD PC Phone Software Kits

Single license plus CTI module	Part No. 9026-00
Single license	Part No. 9026-01
Five licenses	Part No. 9026-05
Ten licenses	Part No. 9026-10
Site license	Part No. 9026-99

Discovery^{CT} for TRIAD Systems

DISCOVERY^{CT}

Explore a new dimension of communication possibilities with the Discovery^{CT} series of Computer Telephone Integration (CTI) solutions for the TRIAD Digital Business Communications System.

The Discovery^{CT} Series provides you with two primary options:

- CT Module — for connecting TRIAD digital telephones to a PC.
- Discovery^{CT} Telephone Integration Board — which replaces the desktop telephone with a board in your PC.

Every TRIAD Digital Telephone is CTI Enabled

TRIAD telephones were engineered to support computer telephony enabled applications — to integrate with your PC, simply connect your telephone to the optional CT Module, and plug the other end into the serial port of your PC. In less than a minute you're ready to go!

Or Eliminate the Desktop Telephone Altogether

The Discovery^{CT} Telephone Integration Kit replaces the traditional desktop digital telephone by providing all the digital keyset circuitry on a card that slides into a PC, making your PC your telephone — and providing you with all the familiar

features of the telephone on

your PC screen. The Discovery^{CT} Integration

Kit comes packaged with a handset to enable you to have private conversations, plus headset compatibility is also included.



Discover Simplicity with Discovery^{CT} Phone Software

Discovery^{CT} software is a Windows-based graphical user interface that combines the familiar flexibility of Windows with all of the TRIAD system features. Graphical icons show the current status of all active lines and extensions. The 24 programmable function buttons let you customize your system with speed dialing, conference calling, or any other features you need to make call handling easy to manage.

Discovery Compatibility

The Discovery^{CT} Integration Board fits into any 16 bit ISA expansion slot inside your PC. Discovery^{CT} software works seamlessly with STARPLUS Dispatch and other voice processing systems so no call is ever missed.

Discovery^{CT} Part No. 9034-10

Windows 3.1 or Windows 95 compatible.

Discovery^{CT} Part No. 9034-20

"The Link", includes Maximizer 4.0 software for one user.

EXCLUSIVE DISTRIBUTION
 Call (800) 843-4863
 for TRIAD Dealer
 Program Qualification

STARPLUS Triad Digital Systems are available only to TRIAD Authorized Dealers. To qualify for a TRIAD dealership, you must complete the approval process, maintain quarterly purchase commitments, and maintain a trained and certified technician on staff. For information on becoming a TRIAD dealer, call Vodavi at (800) 843-4863.

STARPLUS Dispatch™



The way in which incoming calls are handled can make or break a growing business. You need to ensure that calls are correctly routed and messages are reliably delivered. You need to know that callers can get through during busy times and off hours. You know you're going to need a voice messaging system, and you want a system that is full featured yet affordably priced.

Compact, Economical

STARPLUS Dispatch is a self-contained voice processing system that delivers large capability in a compact and economical package. With two to eight ports, a minimum of 35 hours of storage and an unlimited number of voice mailboxes, Dispatch is the perfect choice for the small to mid-sized organization. Plus, Dispatch can grow as your needs grow — the system can start as small as two ports and expand up to 8 ports.

Simple, Versatile Voice Mail

Custom call-routing lets you tailor options and menus to your site. Users can easily customize personal greetings to convey availability based on time of day, day of week, or as-needed. And, up to 100 system-wide distribution lists can be set up by the administrator, plus users can program up to nine personal distribution lists per mailbox.

Automated Attendant

Dispatch can manage communications without a live operator. Dispatch will greet callers with an introduction, ask them to enter an extension or select from options, and even ask for the caller's name before transferring so the recipient can screen the call. Dispatch can park a call in a hold location and announce the call over your in-house paging system. Dispatch can also inform a caller to a busy station where they are located in the station's queue ("third in line"). Plus, Dispatch can provide frequently requested information such as directions to your facility.



Easy Administration

Dispatch's Windows-based set up screen makes installation and administration a snap from a laptop computer, or programming can be done from a telephone set, even from an off-site location. With the "Quick Pick" list, integration with several popular telephone systems is easily implemented. Mailboxes, messages waiting strings, transfer strings, and time of day greetings are automatically implemented.

2 ports	Part No. SP203-02
4 ports	Part No. SP203-04
6 ports	Part No. SP203-06
8 ports	Part No. SP203-08
2 to 4 port upgrade	Part No. SP230-24
2 to 6 port upgrade	Part No. SP230-26
2 to 8 port upgrade	Part No. SP230-28
4 to 6 port upgrade	Part No. SP230-46
4 to 8 port upgrade	Part No. SP230-48
6 to 8 port upgrade	Part No. SP230-68
Technical Manual	Part No. SP250-00
User Guides	Part No. SP252-00

(package of 10)

Quick Reference Cards	Part No. SP253-00
------------------------------	--------------------------

(package of 10)

STARPLUS Digital Dispatch™



STARPLUS Digital Dispatch is a self-contained digital voice processing system that delivers large capability in a compact and economical package. Developed to work exclusively on STARPLUS TRIAD Digital Key Telephone Systems, STARPLUS Digital Dispatch is easy to use and operate. The system installs on digital ports, which allows access to advanced call processing information and features such as Caller ID and smart transfers — features not available through analog integrations. In addition, digital port integration eliminates the need for single-line telephone boards or associated hardware, providing large cost savings. STARPLUS Digital Dispatch is easily upgradable from two to four, six or eight ports, and its Window-based administration is simple and intuitive — making installation and administrative maintenance effortless.

Smart Voice Mail

STARPLUS Digital Dispatch offers new and exclusive features such as Caller ID, time synchronization and smart transfers — features that are available only on digitally integrated voice processing systems. An unlimited number of voice mail boxes, time-sensitive, time controls and menu routing are tools to help you effectively manage calls. Plus, the administrator can set up to 100 system-wide distribution lists and users can program up to nine personal distribution lists. A full 70 hours of voice storage means the system can handle even the busiest offices.

Advanced Automated Attendant

STARPLUS Digital Dispatch offers advanced features to manage communications — automatically. Features such as automated attendant, menu routing, smart transfer, and dial-by-name allow calls to be distributed faster and more efficiently than ever before. The reason? STARPLUS Digital Dispatch capitalizes on the efficiency of digital ports. This streamlines call processing by reducing extension status inquiry times, shortening transfer times, and maximizing port utilization.



2 ports	Part No. TR303-02
4 ports	Part No. TR303-04
6 ports	Part No. TR303-06
8 ports	Part No. TR303-08
2 to 4 port upgrade	Part No. TR330-24
2 to 6 port upgrade	Part No. TR330-26
2 to 8 port upgrade	Part No. TR330-28
4 to 6 port upgrade	Part No. TR330-46
4 to 8 port upgrade	Part No. TR330-48
6 to 8 port upgrade	Part No. TR330-68
Technical Manual	Part No. SP350-00
User Guides	Part No. SP252-00

(package of 10)

Quick Reference Cards	Part No. SP253-00
------------------------------	--------------------------

(package of 10)



STARPLUS Triad Digital Systems are available only to TRIAD Authorized Dealers. To qualify for a TRIAD dealership, you must complete the approval process, maintain quarterly purchase commitments, and maintain a trained and certified technician on staff. For information on becoming a TRIAD dealer, call Vodavi at (800) 843-4863.

PathFinder



PathFinder is your Internet-ready voice processing solution for voice mail auto attendant and IVR applications. Running the Microsoft NT operating system and using Dialogic voice boards, this platform offers exceptional capabilities, growth, and reliability.

Interactive Voice Response

PathFinder begins as a robust Voice Mail and Auto Attendant that is easily expanded to a powerful and flexible IVR. Host interfaces include TCP/IP, RS-232, SMDI, and various cluster controller and terminal emulations. And, it is Open Data Base Compliant (ODBC).

Onelook Unified Messaging

Equipped with Onelook, PathFinder integrates with your Microsoft Outlook screen on your desktop. Voice mail, Fax mail, and e-mail messages all are managed from one location with ease and efficiency.

Internet Fax Delivery

PathFinder can receive a fax from any fax machine, deliver this fax to another PathFinder system via the Internet anywhere in the world. The receiving system can then access a local line and deliver the fax to the destination fax machine. There is no incremental network cost, and no need to replace existing fax machines.



Internet Networking

Point-to-Point Messaging allows the networking of multiple PathFinder systems over the Internet. The location of a mailbox is transparent to the user, and there is no incremental network cost.

Easy to Use

PathFinder's speech prompts make using the system straightforward and user friendly, and its GUI based programming screens make set up and administration a snap.

Choose Your Options

Select from a wide range of optional capabilities to create the solution you need. Modules are available to support analog and digital integrations DTME, RS-232, T1, E1, etc. with all major PBX's, multi-lingual prompting, fax on demand, fax and forward, and much more.

PathFinder^{IVR}



What is Interactive Voice Response?

Interactive Voice Response (IVR) is a sophisticated application of voice processing technology that creates a link between a person and a computer database, via the telephone. Residing on the PathFinder voice processing platform, the system prompts the caller to enter commands and information by speaking or pressing keys on a touch-tone telephone. It then accesses the "host" computer to retrieve the appropriate information, which is spoken back to the caller. PathFinder IVR constructs voice responses by combining pre-recorded spoken words or phrases into complete messages, or by using text-to-speech translation software. The user always hears a unique response based upon the specific request made.

A PathFinder IVR system consists of the basic PathFinder voice processing platform, the Systems Interface Module, and TelePrompt, a specific custom developed scripting program based on the unique customer application. And with the addition of Web-based IVR, the same host information that is spoken back to a caller can be displayed on a Web page; providing both telephone and Web-based access all in one product.

TelePrompt Module

Teleprompt adds the capabilities needed to handle a wide variety of custom voice response applications to the basic PathFinder system. Custom Teleprompt modules are created using PathFinder's ADL (Applications Development Language) to coordinate the specific requirements and protocols that are unique to each IVR solution.

Systems Interface Module

The Systems Interface Module provides the data link to the host computer system in an IVR application. It provides data transfers in real-time through host transport protocols, or off-line in a batch transfer mode. PathFinder can be adapted to interface with a mainframe network or a PC-based Local Area Network (LAN). Regardless of computer, PathFinder IVR looks like another terminal on the network, or another client on the LAN. The host interface can be terminal emulation, cluster controller emulation, RS-232, TCP/IP, ODBC, or other transport protocols.



STARPLUS Triad Digital Systems are available only to TRIAD Authorized Dealers. To qualify for a TRIAD dealership, you must complete the approval process, maintain quarterly purchase commitments, and maintain a trained and certified technician on staff. For information on becoming a TRIAD dealer, call Vodavi at (800) 843-4863.

PathFinder


4 Port Pathfinder voice mail Part No. SHNTD/4KIT4

1- Dialogic 4 port voice card with software

8 Port Pathfinder voice mail Part No. SHNTD/4KIT8

2 Dialogic/4 voice cards with software

12 Port Pathfinder voice mail Part No. SHNTD/4KIT12

3 Dialogic/4 voice cards with software

16 Port Pathfinder voice mail Part No. SHNTD/4KIT16

4 Dialogic/4 voice cards with software

4 Port Pathfinder voice mail Part No. SHNTFAXKIT4

1 Dialogic VFX/40ESC+ card with software

8 Port Pathfinder voice mail Part No. SHNTFAXKIT8

1 Dialogic/4 card & 1 Dialogic VFX/40ESC+ card with software

12 Port Pathfinder voice mail Part No. SHNTFAXKIT12

2 Dialogic/4 card & 1 Dialogic VFX/40ESC+ card with software

16 Port Pathfinder voice mail Part No. SHNTFAXKIT16

3 Dialogic/4 card & 1 Dialogic VFX/40ESC+ card with software

Point to Point (per 4 ports) Part No. SPTMSG
IP Fax (per 4 ports) Part No. SINTERFAX
OneLook (25 pack) Part No. SONELKSYS-25
OneLook (50 pack) Part No. SONELKSYS-50
OneLook (100 pack) Part No. SONELKSYS-100
OneLook (site license) Part No. SONELKSYS-S
4 port DOS to NT upgrade: Part No. HNTDOSUP4

S/w, Key & Docs (no voice hw)

8 port DOS to NT upgrade: Part No. HNTDOSUP8

S/w, Key & Docs (no voice hw)

12 port DOS to NT upgrade: Part No. HNTDOSUP12

S/w, Key & Docs (no voice hw)

16 port DOS to NT upgrade: Part No. HNTDOSUP16

S/w, Key & Docs (no voice hw)

20 port DOS to NT upgrade: Part No. HNTDOSUP20

S/w, Key & Docs (no voice hw)

4 port voice/4 fax DOS to NT upgrade: Part No. HNTDOSUP4FAX

S/w, Key & Docs (no voice/fax hw)

8 port voice/4 fax DOS to NT upgrade: Part No. HNTDOSUP8FAX

S/w, Key & Docs (no voice/fax hw)

12 port voice/4 fax DOS to NT upgrade: Part No. HNTDOSUP12FAX

S/w, Key & Docs (no voice/fax hw)

16 port voice/4 fax DOS to NT upgrade: Part No. HNTDOSUP16FAX

S/w, Key & Docs (no voice/fax hw)

20 port voice/4 fax DOS to NT upgrade: Part No. HNTDOSUP20FAX

S/w, Key & Docs (no voice/fax hw)

8 Port Fax Kit (all ports fax enabled): Part No. HNTFAXKIT8/8

s/w, key, manual, guides & 2 VFX/40ESC+ fax cards

12 Port Fax Kit (all ports fax enabled): Part No. HNTFAX

IT12/12s/w, key, manual, guides & 3 VFX/40ESC+ fax cards



The Wanderer



Running to a meeting, but expecting an important call? Have a customer on the line, but need to look up some information in another office?

With The Wanderer, Vodavi's new integrated wireless telephone, you handle those calls with the freedom and mobility of a cordless handset, plus have access to all of your most important TRIAD telephone system features and functions.



Integration Is the Key

With The Wanderer you don't need any special wiring or a separate extension number to have cordless convenience. The unit simply plugs into the back of any TRIAD digital key telephone and with the touch of a few keystrokes, you're ready to go. The Wanderer provides a mobility range from 40' to 100' depending upon your office environment.

Best of all, you don't have to sacrifice telephone system features and functions to use The Wanderer. Engineered to seamlessly integrate with your TRIAD Digital Telephone System, you have access to your most used features such as Intercom Calling, Hold, Conference, Transfer, Mute, Redial, Flash and Speed Dial, through fixed feature buttons, plus an additional programmable flexible feature button.

Cordless Convenience Provides Mobility

The Wanderer addresses many common communication challenges. A lightweight, 900MHz cordless handset, it provides you with superior sound quality and the mobility not available with traditional wired telephones. With The Wanderer, there are no more missed calls, inaccurate messages or endless phone tag.

It gives you the flexibility to wander away from your desk to a nearby office, meeting room, or check inventory, and still be available at your regular telephone or extension number.

Accessibility Is What Counts

The demands of your job and your customers require you to be more accessible than ever. If you are frequently away from your desk, you no longer have to rely on voice mail as your primary communications method. You will receive all your calls. And because it uses the same telephone number and extension as your desktop telephone, no one needs to know or remember additional telephone numbers.

No special wiring or additional equipment needed

The Wanderer packs big features in a small, compact handset. Because it is engineered to seamlessly integrate with your TRIAD Digital Key Telephone System, it provides exclusive features and functions not available through any other cordless solution. Cordless convenience, accessibility and mobility in an integrated solution makes The Wanderer your best, most cost effective solution.

Handset Features:

- Ten function buttons:
 - Programmable Feature Button
 - On/Off
 - Speed Dial
 - Mute
 - Conference
 - Flash
 - Transfer
 - Volume Down
 - Volume Up
 - Hold
- 2 line x 12 character display
- Distinctive ringing tone identifies internal and external calls
- 12 button Dial Pad
- Antenna
- Headset Jack 2.5mm
- Hearing-aid compatible receiver
- 4-6 hour talk time with 24-hour standby time
- Low battery indication when battery capacity falls below 25%

Charging Base Unit:

- RF Circuitry
- 900 MHz Analog
- Automatic 40 channel scanning to ensure quality transmission
- Locator Button
- Power Supply to plug into wall outlet
- RJ-11 cable to connect to TRIAD Digital telephone

Optional:

- Headset
- Spare battery

Other:

- CTI Module Function not available on the Digital Telephone when The Wanderer is installed



The Wanderer

Part No. TR9017-75

Discovery ACD

DISCOVERY ACD

Does your staff perform one or more functions involving telephone interaction with customers? Are these calls an unlimited potential of business opportunities? Does your company have a need for improved customer service to remain competitive? If the answer is yes, Vodavi's new Discovery ACD can help you. Regardless of what your application covers: order entry, claims, help desk, catalog sales, reservations, Discovery ACD can streamline and improve each facet of your operation.

Discovery ACD is a customizable workflow engine that distributes, routes and queues voice calls, while providing real-time, immediate visual feedback on agent/rep activity, statistics data on inbound and outbound calls, historical reporting and many other features. Discovery ACD integrates seamlessly with TRIAD systems to deliver an extraordinary amount of information, a wide variety of features and capabilities and an amazing high-level reporting package.

Customize routing methods to meet your immediate or temporary needs. Allow your callers to choose additional routing to obtain specialized services. Do you have upcoming an important promotion? Keep your callers informed of upcoming sales or promotions by synchronizing prerecorded messages to play when a call is first connected.

Real time displays help managers address immediate issues. A wide variety of fully configurable reports on inbound and outbound call activities provide the information to improve operational controls and access to unlimited historical data can be used to forecast future trends.

Discovery ACD doesn't require special programming skills, allowing managers to easily define call routing, select agents or sales reps and delineate decision critical call activity as situations arise. Discovery ACD password protection deters unauthorized changes to the system.

Take advantage of an ACD system today. Discovery ACD, the end-to-end solution for the one-on-one business.

Discovery ACD	Part No. 9820-00
Discovery ACD ^{Plus}	Part No. 9821-00
Discovery ACD ^{Plus} Demo Disk	Part No. 9834-00
Discovery ACD ^{Plus} Manual	Part No. 9850-00
Discovery ACD ^{Plus} User Guide	Part No. 9855-00
Discovery ACD ^{Plus}	Part No. TR9820-00
Discovery ACD ^{Plus}	Part No. TR9821-00

Discovery^{IP}

DISCOVERY^{IP}



Vodavi's Discovery^{IP} Data/Voice gateway is a plug-and-play Internet Telephony Solution providing packetized voice transmission over both the public Internet and private IP networks. This 4 or 8 port turnkey system is ideal for companies with geographically distributed workgroups that want to save money on long distance intra-office voice and fax communications.

The Discovery^{IP} gateway easily installs between corporate headquarters and branch office telephone networks.

Using emerging industry standards for voice and fax compression, the same bandwidth that previously supported only one voice connection can now carry voice conversations.

Discovery^{IP} is a 4 or 8 port plug-and-play self-contained programmable platform, containing a three-board card set:

1. Telephone line interface board
2. Digital Signal Processor (Voice Compression card)
3. LAN interface

This is a complete turnkey solution that installs in minutes. Just connect the voice/fax equipment and LAN, then map phone numbers to IP addresses... it's that simple.

STARPLUS Brochures

Vodavi Communications Systems offers a limited amount of brochures at no charge. Brochures are also available for sale in packages of 25. These brochures can be ordered through your distributor.

Please call your account manager at (800) 843-4863 for more information.

P1000	STARPLUS Product Catalog
SP2000	STARPLUS Presentation Folder
LIT 1	STARPLUS Literature Pack
P1500	Vodavi Corporate Profile
P1256-01	STARPLUS Electronic Key
P1456-01	STARPLUS Digital Key Systems
P7000	STARPLUS DHS
L1001	STARPLUS Dispatch Voice Processing

Audio and Visual Support/Sales Materials

Audio and Visual Support

V2000-00	Digital Systems Applications Video
Please Call	Corporate Sales Presentation

Sales Materials

Please Call	CTI Developer's Information Package
P9077	Configuration Worksheet Disk (Microsoft Excel)
P9076-01	Configuration Worksheet with wholesale pricing

TRIAD Documentation & Brochures

Documentation

TRIAD Digital Systems Station User's Guide	Part No. 8052-10
TRIAD Digital Systems Station User's Guide (package of 6)	Part No. 8052-00
TRIAD SLT User's Guide (package of 6)	Part No. 8053-00
TRIAD Attendant User's Guide	Part No. 8054-00
TRIAD S Documentation Kit	Part No. 5050-00
TRIAD 1 /2 /3 Documentation Kit	Part No. 8050-00
TRIAD Product Description Manual	Part No. 8050-11

TRIAD Digital Systems

Documentation CD-ROM	Part No. 8050-14
Includes Feature Description / Operation / System Configuration Manual; Installation Manual; Programming Manual; TRIAD Station User's Guide; ACD User Guide; Attendant User Guide; Single Line User Guide; and Quick Reference Card in Adobe Acrobat® PDF format.	

Brochures

TRIAD pocket folder	L1009
TRIAD Digital Systems product brochure	L1011
TRIAD Features & Benefits	L1014
TRIAD Connectivity Diagram	L1012
STARPLUS & TRIAD product guide	L1030
STARPLUS Digital Dispatch	L1024
TRIAD PathFinder	L1035
TRIAD PathFinder IVR	L1036
TRIAD Wanderer	L1027
TRIAD Discovery CT	L1018
TRIAD Dealer Handbook	L1020
TRIAD Selling Guide	L1013

Sales Support

Email: salesinfo@vodavi.com

To ensure prompt and timely assistance to customers with product questions and inquiries, Vodavi Communications Systems has divided the United States into nine sales regions, plus, an international region. Each region has been assigned an inside Account Manager and an outside Regional Sales Manager.

The inside Account Manager works in tandem with the outside Regional Sales Manager to aid customers with system configuration, price verifications, literature requests, shipment tracking and interfaces with customer support departments or operations departments.

Vodavi's Sales Department is open Monday through Friday, 7:00 am to 5:00 pm, MST (Winter through Spring) and 6:00 am to 5:00 pm, MST (Summer through Fall). Please note that the State of Arizona does not go on Daylight Savings Time.

Outside Locations	(800) 843-4863
Scottsdale, Arizona	(480) 948-1971

Technical Support

Email: techsupport@vodavi.com

If an interconnect or an installer requires technical assistance, Vodavi's Technical Support Department is available Monday through Friday, 7:00 am to 5:00 pm, MST (Winter through Spring) and 6:00 am to 5:00 pm,

MST (Summer through Fall). Please note that the State of Arizona does not go on Daylight Savings Time. For emergencies, a beeper service is available up to midnight, 7 days a week.

Outside Locations	(800) 356-7279
Scottsdale, Arizona	(480) 443-6000

Repair Services & Express Replacement

Email: mra@vodavi.com

Repair Service. Aztec International is now handling all Vodavi repairs. This new simplified process makes it easy for you. Simply package and ship you repairs with a packing slip to one of the two receiving locations listed.

MRA/Express Replacement. For out-of-box failures we provide express replacement service, which provides you with replacement components the next business day. Materials Return Authorization (MRA) are coordinated through our customer service department to ensure that returns are tracked and expedited appropriately.

Call 800-356-7279 for customer service.

Aztec International
155 Woodward Avenue
South Norwalk, CT 06854

Tel: 800-759-2368
Tel: 203-854-5100
Fax: 203-853-9111
Contact: Ted Estwan

Aztec International
2414 West 14th Street
Tempe, AZ 85281

Tel: 800-659-7750
Tel: 480-967-2050
Fax: 480-967-8315
Contact: Ray Maccani

Product Training

Email: training@vodavi.com

The Vodavi Institute provides comprehensive hands-on training for your technical staff throughout the year. Training sessions are held throughout the country and each one provides complete certification — from configuration, features and programming, to installation and

service for that particular product. Contact your inside account manager or regional sales manager if you have any questions regarding product training or certification.



VODAVI

WERE TALKING
TECHNOLOGY

www.vodavi.com

©1999 Vodavi Communications Systems, Inc. StarPLUS is a registered trademark and TRIAD, PathFinder, The Wanderer, Discovery[®], Discovery ACD, Dispatch, CallSort PRO, and PC Phone are trademarks of Vodavi Communications Systems, Inc. All rights reserved. Some of the product names mentioned herein are for informational purposes and may be registered trademarks or trademarks of their respective companies. Products, features and specifications are subject to change without notice.

P1000 9/99